



**FW-760**



## 星锐牌工业用缝纫机

SHING RAY BRAND INDUSTRIAL SEWING MACHINE

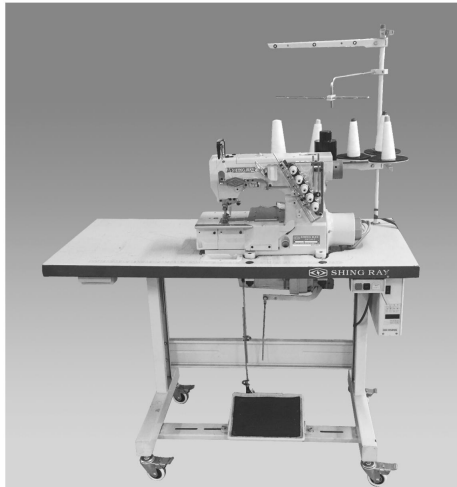
### 平台型高速三针绷缝机

FLAT-BED HIGH SPEED  
INTERLOCK STITCH MACHINE



零件图

PARTS BOOK



**SHING RAY®**  
INDUSTRIAL SEWING MACHINE  
星锐牌工业用缝纫机

版权所有 · 翻印必究



星锐缝纫机(嘉兴)有限公司

SHING RAY SEWING MACHINE(JIAXING) CO., LTD.



星锐缝纫机(嘉兴)有限公司



SHING RAY SEWING MACHINE(JIAXING) CO., LTD.

※ 本书所记载的规格式样或外观，因加以改良，有时不预告即加以变更，请见谅。 The specifications in this book are subject to change without notifications.

CONTENTS 目次	页数
MISCELLANEOUS COVERS (1)	
机壳机构(1).....	1
MISCELLANEOUS COVERS (2)	
机壳机构(2).....	2
MISCELLANEOUS COVERS (3)	
机壳机构(3).....	3
MISCELLANEOUS THREAD EYELETS-3NEEDLE	
过线机构-三针五线.....	4
MISCELLANEOUS THREAD EYELETS-4NEEDLE	
过线机构-四针六线.....	5
MISCELLANEOUS BUSHINGS	
套管机构.....	6
MAIN SHAFT DRIVING MECHANISM	
下主轴机构组.....	7
UPPER SHAFT & NEEDLE THREAD TAKE-UP MECHANISM	
上主轴及针线提线诸元.....	8
NEEDLE BAR MECHANISM	
针柱机构.....	9
NEEDLE GUARD & LOOPER DRIVING MECHANISM	
顶针片及下勾针驱动机构.....	10
PRESSER FOOT MECHANISM	
压脚机构.....	11
FEED DRIVING MECHANISM	
送料具驱动机构.....	12
FEED DRIVING CONTROL MECHANISM	
送料具驱动控制机构.....	13
SPREADER MECHANISM	
上饰线驱动机构.....	14
ELECTRICAL TYPE DIRECT DRIVING PRESSER FOOT LEFTER	
电磁式直接驱动抬押脚组.....	15
LUBRICATING MECHANISM	
润滑机构.....	16
NEEDLE THREAD TAKE-UP MECHANISM	
针线提线诸元.....	17
THREAD STAND	
线架组.....	18
"Q" DEVICE (1)	
"Q"标准喇叭包边装置 (1).....	19
"Q" DEVICE (2)	
"Q"标准喇叭包边装置 (2).....	20

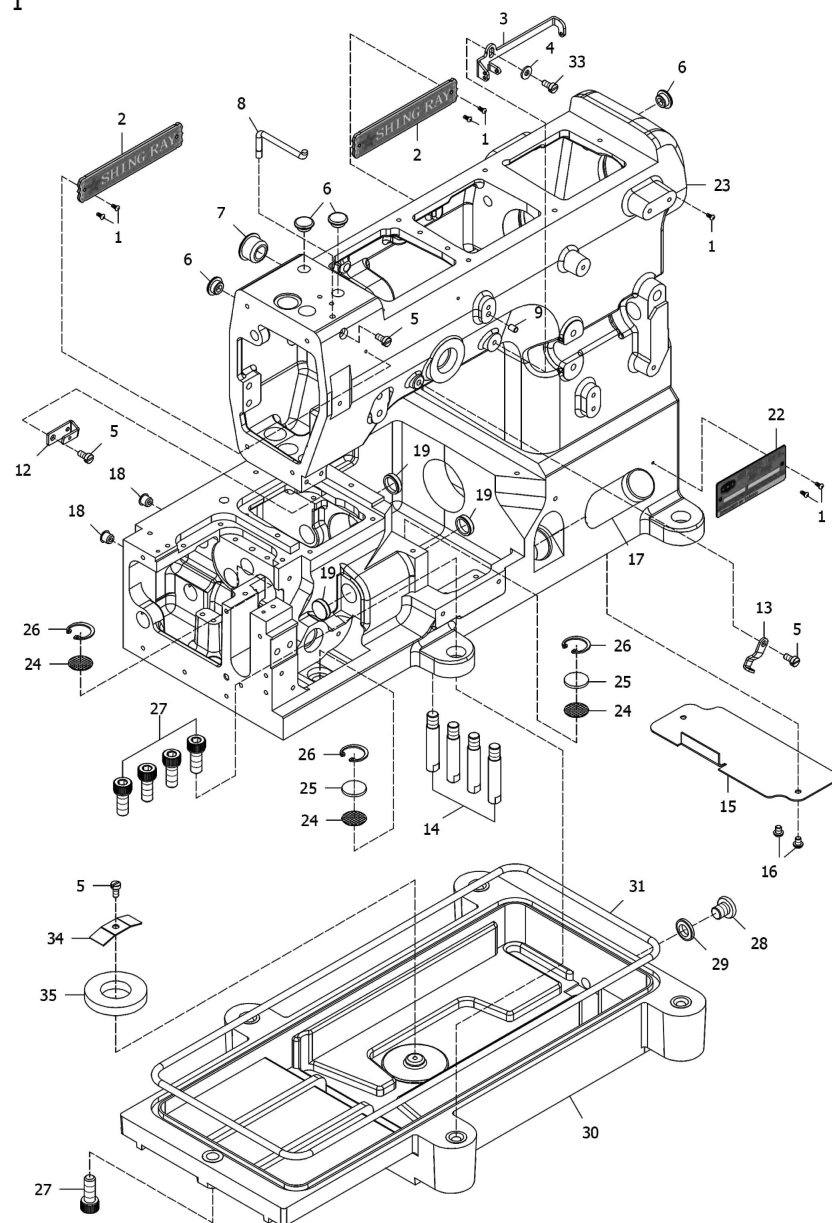
CONTENTS 目次	页数
PULLER MECHANISM EXCL FOR TAPE (1)	
织带专用拖轮机构(1).....	21
PULLER MECHANISM EXCL FOR TAPE (2)	
织带专用拖轮机构(2).....	22
PULLER MECHANISM EXCL FOR TAPE (3)	
织带专用拖轮机构(3).....	23
KNIFE DRIVING MECHANISM (1)	
右修刀驱动机构(1).....	24
KNIFE DRIVING MECHANISM (2)	
右修刀驱动机构 (2).....	25
ATTACHMENT BOX	
附件盒.....	26
ACCESSORIES	
附配件.....	27
EXCLUSIVE PARTS	
专用配件.....	28
DESK BORD MEASUREMENT PICTURE	
桌板尺寸图.....	
INSTALLATION	
机台与桌板组装说明.....	
GAUGE PARTS	
标准规格件.....	附件一

※零件本使用说明:

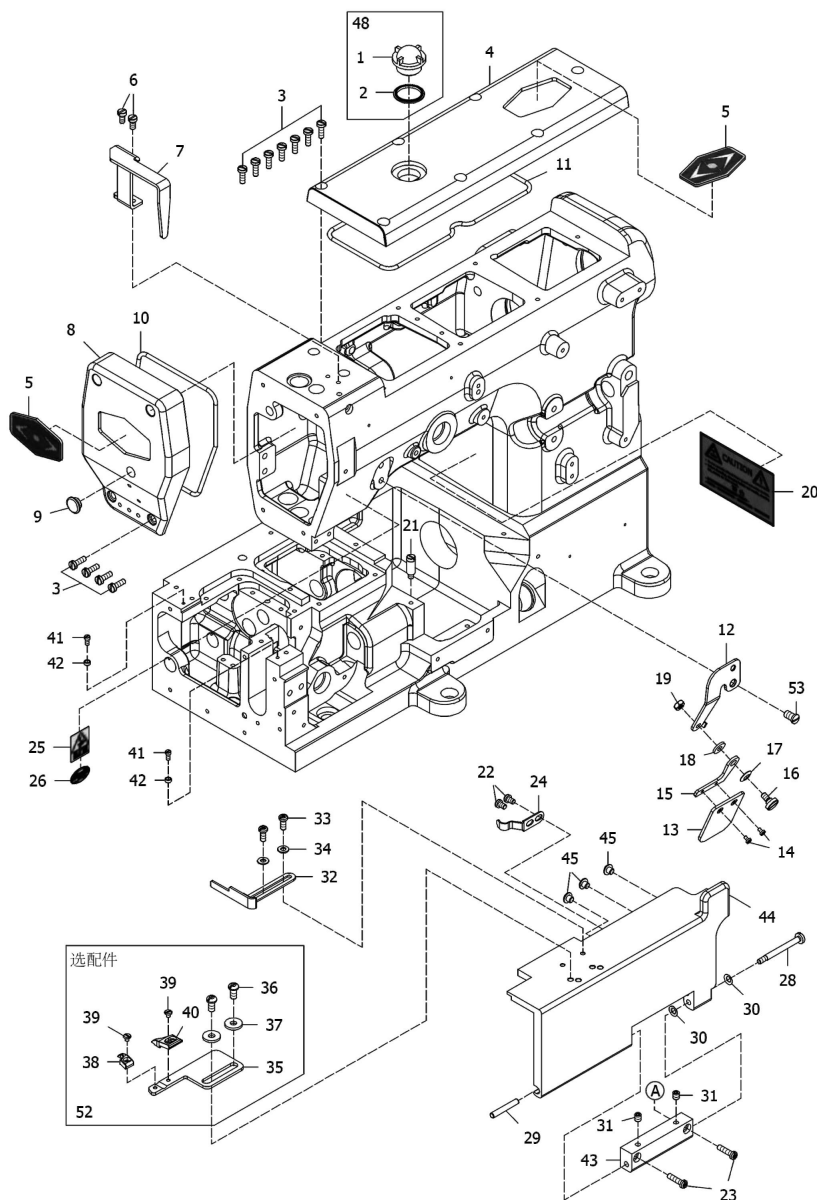
- 1、当零件用虚线表示，零件编号为 X-X 时，表示非该页面零件，且仅用于辅助说明  
组装位置;例如: 7-14 为第7页、零件序号14的零件。
- 2、当零件用实线表示，零件编号为 X-X 时，表示该页需使用此零件，但已编制在其他  
页，为避免销售人员与客户有遗漏而绘制;例如:36-32为第36页、零件序号32的零件。
- 3、当组件中有包含其他页的零件时，零件用实线表示，零件编号为 X-X  
例如: 4-15 为第4页、零件序号15的零件。
- 4、组件中的零件用虚线表示一律代表不包含该零件，实线则为包含。



1

**MISCELLANEOUS COVERS(1)****机壳机构 (1)**

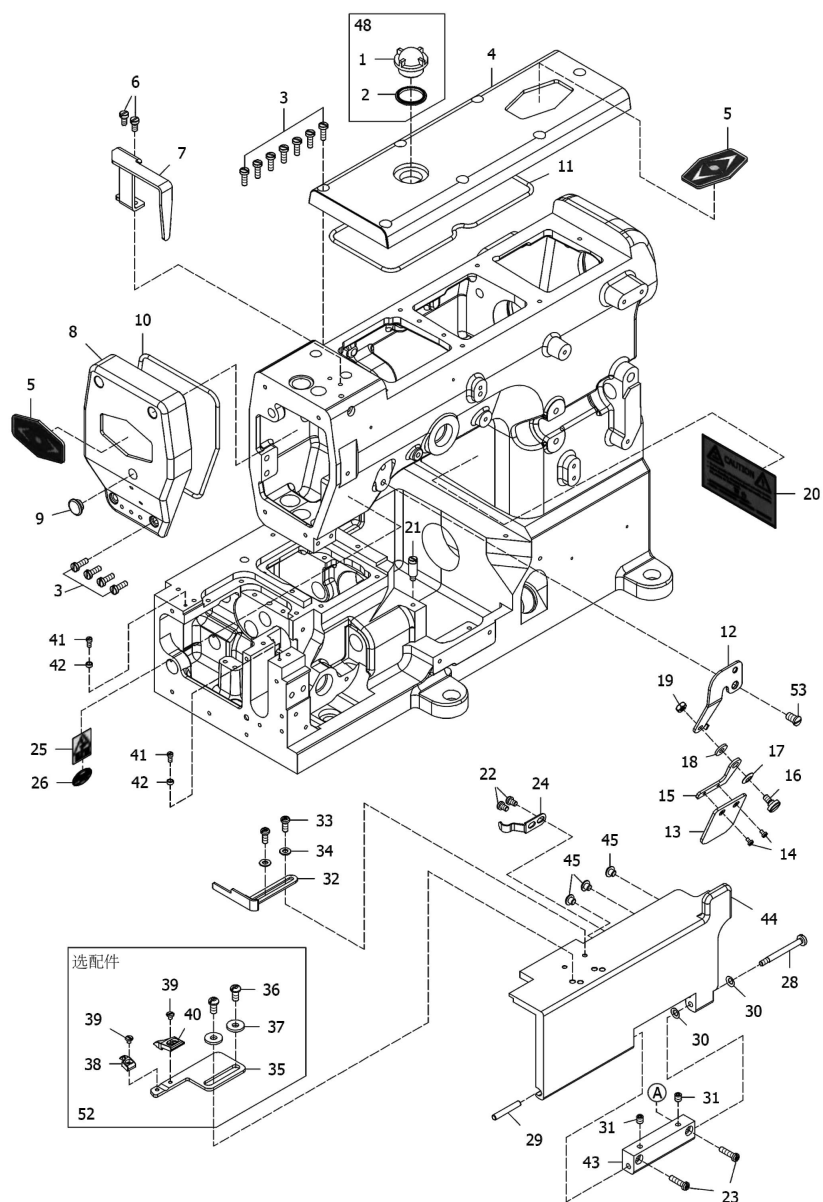
Ref.	Parts			Amt.
No.	No.	Description	品 名	Req.
1	07870111	Rivet.....	铆钉.....	7
2	07870110	Brand Name Plate.....	公司铭牌.....	2
3	07870322	Top Cover Thread Eyelet (Right).....	上饰线过线杆 (右).....	1
4	07870323	Washer (WF04).....	垫片.....	1
5	07870125	Screw (M4-0.7×8).....	螺丝.....	4
6	07870107	Seal Plug.....	止油胶塞.....	4
7	07600107	Oil Seal Cap.....	孔塞.....	1
8	07870339A	Needle Thread Guide.....	针线导架.....	1
9	07870338	Guide Pin.....	固定插销.....	1
12	07870342	Needle Thread Retainer Support.....	针线张力调整组固定座(小).....	1
13	07600113	Top Cover Thread Eyelet (Left).....	上饰线过线杆 (左).....	1
14	07600114	Machine Frame Supporting Bar.....	机体支柱.....	4
15	07600115	Dust Proof Plate.....	防尘盖.....	1
16	07600116	Screw (M4-0.7×5).....	螺丝.....	2
17	07600117	Oil Sight Gauge.....	外视油量计.....	1
18	07600118	Seal Plug.....	止油胶塞.....	2
19	07600119	Seal Plug.....	止油封塞.....	3
22	07600122	Model Plate(see the below).....	型号铭牌.....	1
23	07600123	Machine Frame Unit.....	机壳.....	1
24	07600124	Filter Net.....	铝片过滤网.....	3
25	07600125	Oil Screen.....	羊毛滤油网.....	2
26	07600126	C-Sanpring.....	C型止环.....	3
27	07870122	Screw(M8-1.25×20).....	螺丝.....	5
28	07600128	Screw (3/8-28×10).....	螺丝.....	1
29	07600129	Drain Hole Seal.....	排油螺丝油封.....	1
30	07600130	Oil Reservoir.....	油槽.....	1
31	07600131	Oil Reservoir Gasket.....	油槽止油胶垫.....	1
33	07870102	Screw(M4-0.7×12).....	螺丝.....	1
34	07870126	Magnet Holder.....	磁铁固定压板.....	1
35	07870127	Magnet.....	磁铁.....	1



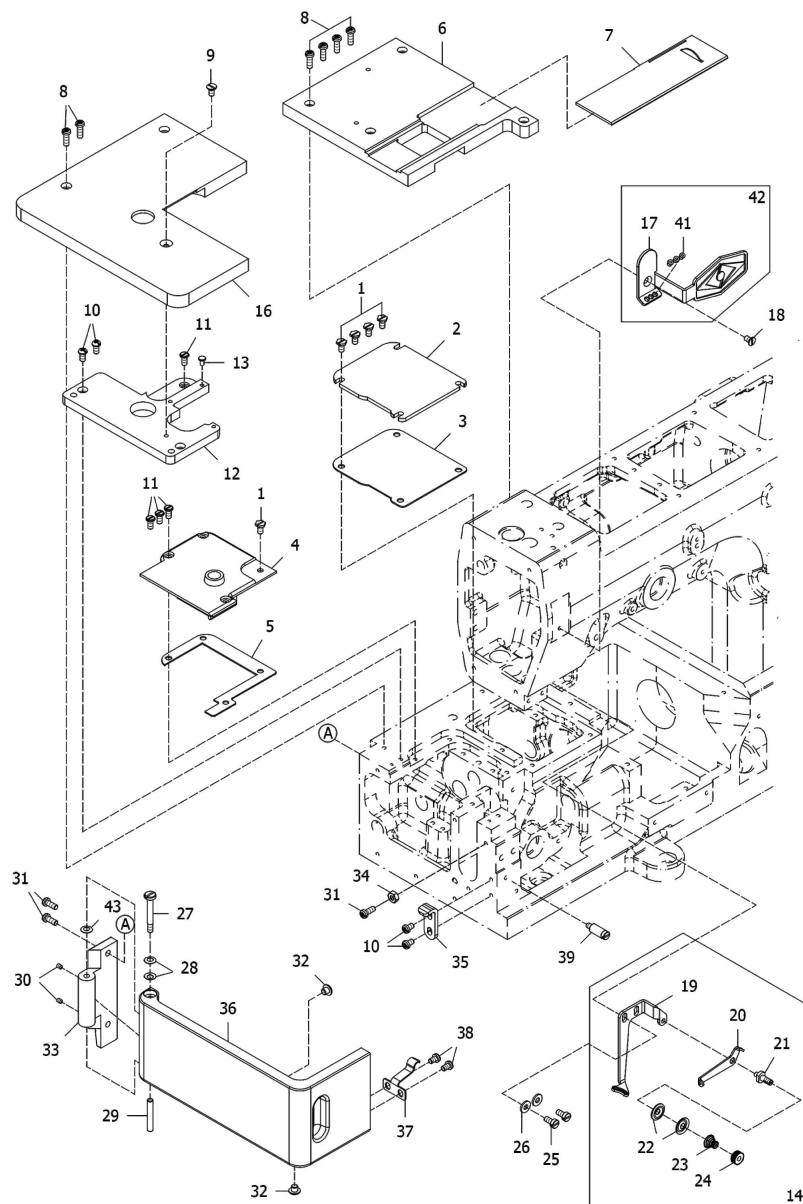
## MISCELLANEOUS COVERS (2)

## 机壳机构 (2)

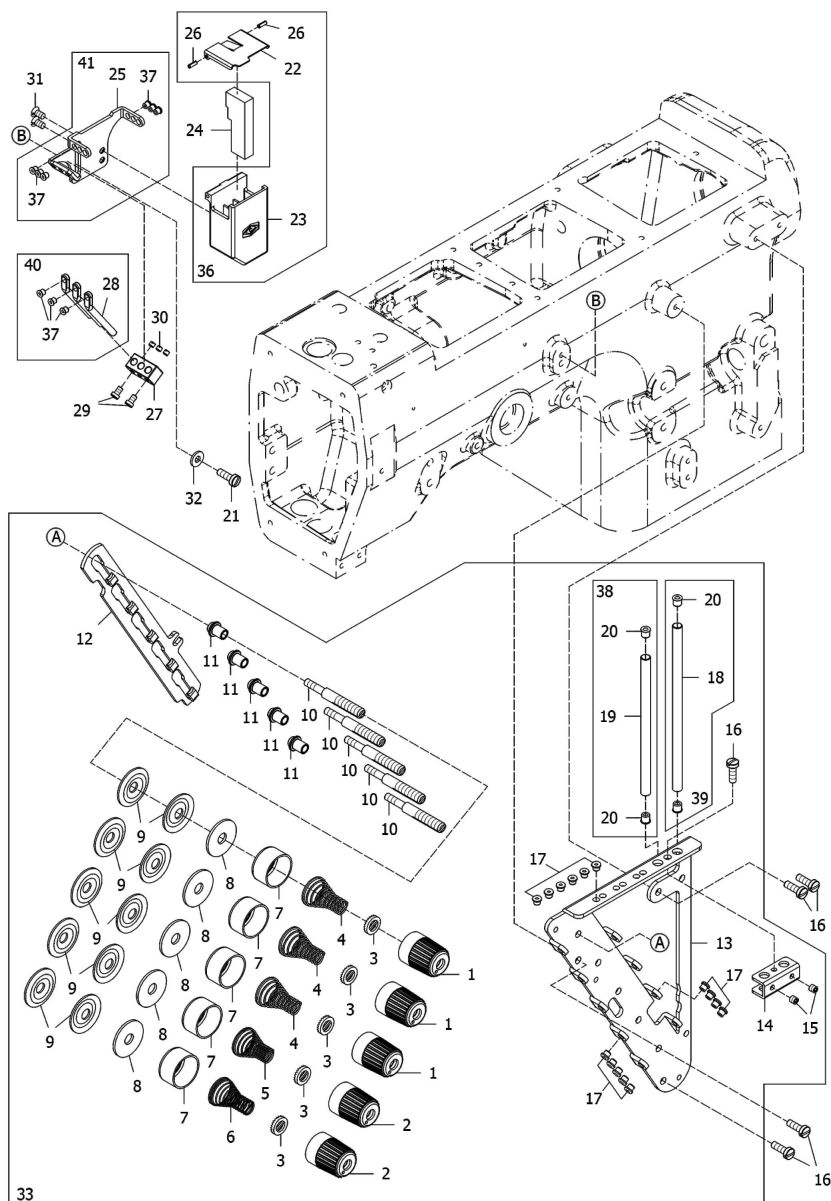
Ref. No.	Parts No.	Description	品 名	Amt. Req.
1	07870104	Oil Sight Window.....	上油镜.....	1
2	07870103	Oil Sight Seal.....	上油镜油封.....	1
3	07870102	Screw(M4-0.7×12).....	螺丝.....	11
4	07870101	Top Cover.....	上盖.....	1
5	07870106	Emblem.....	铭牌.....	2
6	07870125	Screw (M4-0.7×8).....	螺丝.....	2
7	07870211A	Needle Bar Guard.....	针柱护架.....	1
8	07870109	Head Cover.....	上侧盖.....	1
9	07870107	Seal Plug.....	止油胶塞.....	1
10	07870108	Head Cover Gasket.....	上侧盖垫片.....	1
11	07870105	Top Cover Gasket.....	上盖垫片.....	1
12	07870423	Safety Plate Support.....	护目镜固定座.....	1
13	07870425	Safety Plate.....	护目镜片.....	1
14	07870426	Screw (3/32-56×4).....	螺丝.....	2
15	07870427	Safety Plate Holder.....	护目镜支架.....	1
16	07870428	Screw (11/64-40×7.5).....	螺丝.....	1
17	07870429	Conical Spring Washer.....	锥形弹簧垫圈.....	1
18	07870430	Washer.....	垫片.....	1
19	07870431	Nut.....	螺帽.....	1
20	07870241	Warning Sticker(Tetraon).....	警告贴纸(四角形).....	1
21	07600221	Screw (M4-0.7×5).....	螺丝.....	1
22	07600222	Screw (M4-0.7×6).....	螺丝.....	2
23	07600223	Screw (M4-0.7×16).....	螺丝.....	2
24	07600224	Flat Spring.....	前盖定位横片.....	1
25	07870133	Warning Sticker(Triangle).....	警告贴纸(三角形).....	1
26	07870139	Warning Sticker(Ellipse).....	警告贴纸(椭圆).....	1
28	07600228	Screw(M4-0.7×8.5).....	螺丝.....	1
29	07600229	Pin.....	插销.....	1
30	07870226	Conical SpringWasher.....	锥形弹簧垫圈.....	2
31	07600231	Screw(M5-0.8x6).....	螺丝.....	2
32	07600232	Fabric Guide.....	布导器.....	1
33	07600233	Screw(M4-0.7×10).....	螺丝.....	2
34	07870323	Washer (WF04).....	垫片.....	2
35	07600235	Bracket.....	托架.....	1
36	07600236	Screw(M5-0.8x10).....	螺丝.....	2
37	07600237	Washer.....	垫片.....	2
38	07600238	Fabric Guide.....	布导器.....	1
39	07600239	Screw (M3-0.5×3.4).....	螺丝.....	2
40	07600240	Fabric Guide.....	布导器.....	1
41	07870218	Screw (M3-0.5×6.3).....	螺丝.....	2

**MISCELLANEOUS COVERS (2)****机壳机构 (2)****2**

Ref.	Parts			Amt.
No.	No.	Description	品 名	Req.
42	07870219	Positioning Bushing.....	定位衬套.....	2
43	07600243	Front Cover Hinge.....	前盖铰链.....	1
44	07600244	Front Cover .....	前盖.....	1
45	07600245	Cushion.....	避震垫.....	3
48	07870144	Oil Sight Window C.Set.....	上油镜组.....	1
52	07600252	Bracket C.Set.....	托架组 (选配件).....	1
53	07870341	Screw (M6-1×10).....	螺丝.....	1

**MISCELLANEOUS COVERS (3)****机壳机构 (3)**

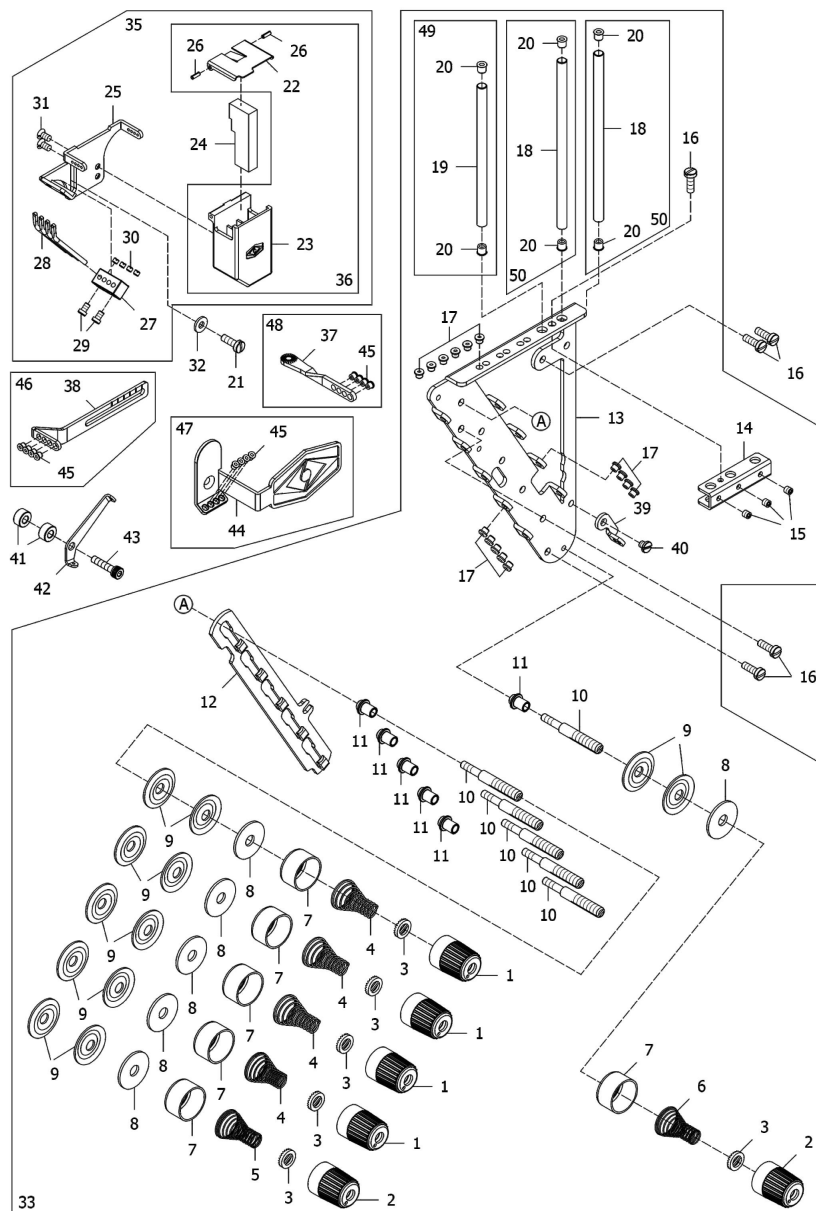
Ref. No.	Parts No.	Description	品 名	Amt. Req.
1	07600301	Screw (M4-0.7×8).....	螺丝	5
2	07600302	Top Cover (Right).....	右上盖	1
3	07600303	Top Cover Gasket (Right).....	右上盖防油衬垫	1
4	07600304	Top Cover (Left).....	左上盖	1
5	07600305	Top Cover Gasket (Left).....	左上盖防油衬垫	1
6	07600306	BED Cover (Right).....	BED右上盖	1
7	07600307	Cover.....	滑板	1
8	07600308	Screw (M4-0.7×12).....	螺丝	6
9	07600309	Screw (M4-0.7×8).....	螺丝	1
10	07600310	Screw (M4-0.7×8).....	螺丝	4
11	07600311	Screw (M4-0.7×8).....	螺丝	4
12	07600312	Stitch Plate Support.....	针板基座	1
13	07600313	Needle Plate Cushion Plug.....	针板基座防振垫	1
14	07600314	Top Cover Thread Guide.....	上饰组板组件	1
16	07600316	BED Cover (Left).....	BED左上盖	1
17	07870353A	Needle Thread Eyelet.....	过线导片	1
18	07870203	Screw (M4-0.7×7).....	螺丝	1
19	07600319	Top Cover Thread Guide.....	上饰线导板	1
20	07870348	Supplementary Thread Guide.....	上饰线辅助导板	1
21	07600321	Tension Post.....	上饰线张力调整组支柱	1
22	07870350	Supplementary Tension Disc.....	上饰线张力调整盘	2
23	07600323	Supplementary Tension Spring.....	上饰线张力调整弹簧	1
24	07870352	Thread Tension Spring Cap.....	松紧调钮	1
25	07870102	Screw (M4-0.7×12).....	螺丝	2
26	07870323	Washer (WF04).....	垫片	2
27	07600327	Screw (M4-0.7×8).....	螺丝	1
28	07600328	Conical Spring Washer.....	锥形弹簧垫圈	2
29	07600229	Pin.....	插销	1
30	07600330	Screw (M3-0.5x4).....	螺丝	2
31	07600233	Screw (M4-0.7×10).....	螺丝	3
32	07600245	Cushion.....	避震垫	2
33	07600333	Side Cover Hinge.....	侧翻盖后扣	1
34	07870244	Nut.....	螺帽	1
35	07600335	Bracket.....	托架	1
36	07600336	Side Cover.....	左侧盖	1
37	07600337	Flat Spring.....	门门弹片	1
38	07600222	Screw (M4-0.7x6).....	螺丝	2
39	07600221	Screw (M4-0.7x5).....	螺丝	1
41	07870365	Thread Eyelet.....	陶瓷过线孔	3
42	07870367	Needle Thread Eyelet C.Set.....	过线导片组	1
43	07870226	Conical Spring Washer.....	锥形弹簧垫圈	1



## MISCELLANEOUS THREAD EYELETS-3NEEDLE

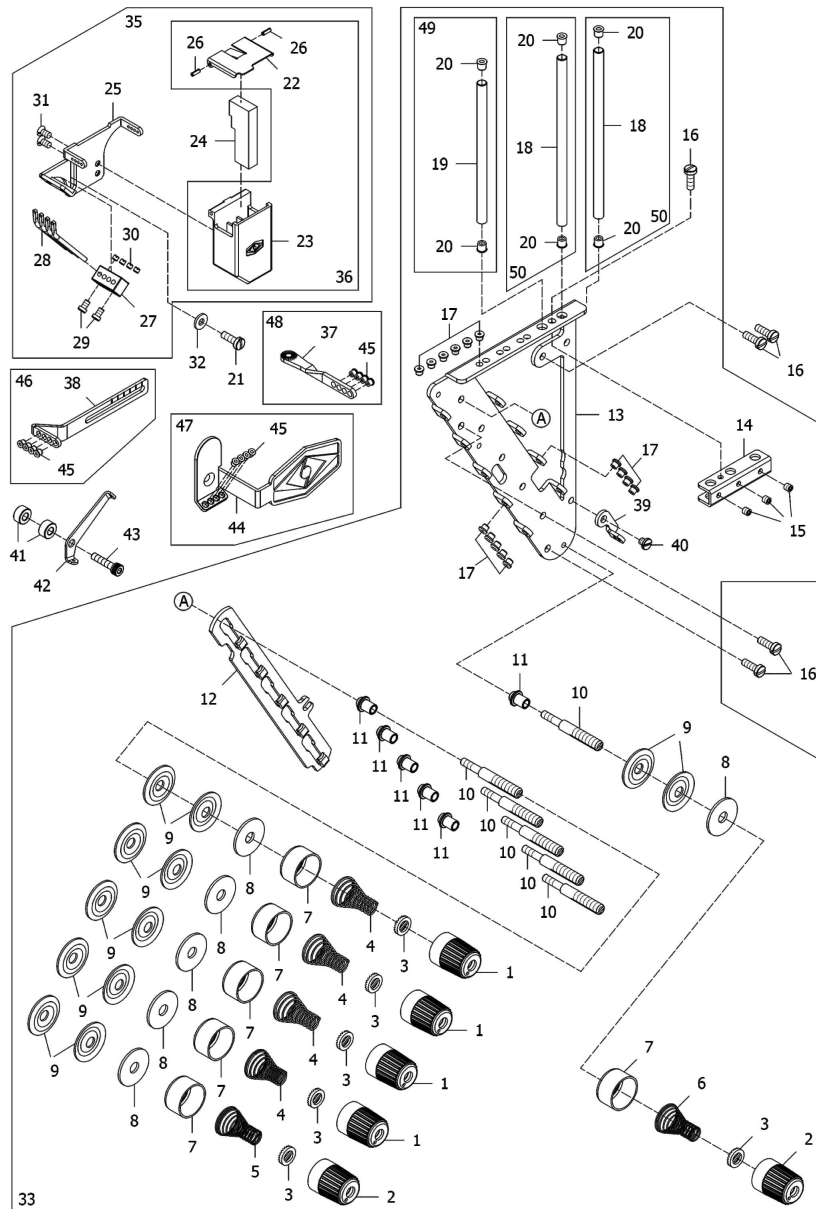
## 过线机构-三针五线

Ref.	Parts			Amt.
No.	No.	Description	品 名	Req.
1	07870301	Thread Tension Spring Cap(Blue).....	上线张力弹簧调整钮(蓝)....	3
2	07870343	Thread Tension Spring Cap(Red).....	上线张力弹簧调整钮(红)....	2
3	07870302	Tension Spring Disc Support.....	张力弹簧调整圆盘.....	5
4	07870372	Needle Thread Tension Spring.....	针线张力弹簧.....	3
5	07870373	Top Cover Thread Tension Spring.....	上饰线张力弹簧.....	1
6	07870374	Looper Thread Tension Spring .....	下勾针张力弹簧.....	1
7	07870306	Thread Tension Spring Retainer.....	上线张力弹簧固定座.....	5
8	07870307	Felt.....	毡垫.....	5
9	07870308	Tension Disc.....	张力调整盘.....	10
10	07870309	Tension Post.....	上线张力弹簧支柱.....	5
11	07870310	Tension Post Ferrule.....	上线张力弹簧支柱套圈.....	5
12	07870311	Tension Disc Separator.....	上线张力圆盘分离器.....	1
13	07870312	Tension Post Support.....	上线张力组支柱座.....	1
14	07870313	Thread Eyelet Pipe Stay.....	过线导管固定座.....	1
15	07870229	Screw (M4-0.7×4).....	螺丝.....	2
16	07870125	Screw (M4-0.7×8).....	螺丝.....	5
17	07870317	Thread Eyelet .....	陶瓷过线孔.....	15
18	07870320	Thread Eyelet Pipe (Long).....	过线导管 (长).....	1
19	07870321	Thread Eyelet Pipe (Short).....	过线导管 (短).....	1
20	07870363	Thread Eyelet.....	过线陶瓷(深灰).....	4
21	07870102	Screw(M4-0.7×12) .....	螺丝.....	1
22	07870324	SP Container Cover.....	硅油槽盖.....	1
23	07870325	SP Container.....	硅油储存槽.....	1
24	07870326	Felt.....	吸油毡.....	1
25	07870327A	Needle Thread Eyelet.....	针线过线架.....	1
26	07870328	SP Container Cover Pin.....	硅油槽盖固定插销.....	2
27	07870329A	Thread Eyelet Support.....	过线杆固定座.....	1
28	07870330A	Thread Eyelet (Front).....	过线杆.....	3
29	07870366	Screw (1/8-44×5).....	螺丝.....	2
30	07870319	Screw (1/8-44×2.6).....	螺丝.....	3
31	07870333	Screw (9/64-40×6.7).....	螺丝.....	2
32	07870323	Washer (WF04).....	垫片.....	1
33	07870336	Tension Post Support C.Set.....	上线张力支柱座组件.....	1
36	07870334	SP Container C.Set.....	硅油储存槽组件.....	1
37	07870365	Thread Eyelet .....	陶瓷过线孔.....	9
38	07870368	Thread Eyelet Pipe C.Set (Long).....	过线导管组 (短).....	1
39	07870369	Thread Eyelet Pipe C.Set (Short).....	过线导管组 (长).....	1
40	07870370	Thread Eyelet (Front) C.Set.....	过线杆组.....	1
41	07870371	Needle Thread Eyelet C.Set.....	针线过线架组.....	1

**MISCELLANEOUS THREAD EYELETS-4NEEDLE****过线机构-四针六线**

Ref. No.	Parts No.	Description	品 名	Amt. Req.
1	07870301	Thread Tension Spring Cap(Blue).....	上线张力弹簧调整钮(蓝)....	4
2	07870343	Thread Tension Spring Cap(Red).....	上线张力弹簧调整钮(红)....	2
3	07870302	Tension Spring Disc Support.....	张力弹簧调整圆盘.....	6
4	07870372	Needle Thread Tension Spring.....	针线张力弹簧.....	4
5	07870373	Top Cover Thread Tension Spring.....	上饰线张力弹簧.....	1
6	07870374	Looper Thread Tension Spring.....	下勾针张力弹簧.....	1
7	07870306	Thread Tension Spring Retainer.....	上线张力弹簧固定座.....	6
8	07870307	Felt.....	毡垫.....	6
9	07870308	Tension Disc.....	张力调整盘.....	12
10	07870309	Tension Post.....	上线张力弹簧支柱.....	6
11	07870310	Tension Post Ferrule.....	上线张力弹簧支柱套圈.....	6
12	07870311	Tension Disc Separator.....	上线张力圆盘分离器.....	1
13	07870312	Tension Post Support.....	上线张力组支柱座.....	1
14	07873613	Thread Eyelet Pipe Stay.....	过线导管固定座.....	1
15	07870314	Screw (M4-0.7×4).....	螺丝.....	3
16	07870125	Screw (M4-0.7×8).....	螺丝.....	5
17	07870317	Thread Eyelet.....	陶瓷过线孔.....	15
18	07870320	Thread Eyelet Pipe (Long).....	过线导管(长).....	2
19	07870321	Thread Eyelet Pipe (Short).....	过线导管(短).....	1
20	07870363	Thread Eyelet.....	过线陶瓷(深灰).....	6
21	07870102	Screw(M4-0.7×12).....	螺丝.....	1
22	07870324	SP Container Cover.....	硅油槽盖.....	1
23	07870325	SP Container.....	硅油储存槽.....	1
24	07870326	Felt.....	吸油毡.....	1
25	07870327A	Needle Thread Eyelet.....	针线过线架.....	1
26	07870328	SP Container Cover Pin.....	硅油槽盖固定插销.....	2
27	07870329A	Thread Eyelet Support.....	过线杆固定座.....	1
28	07870330A	Thread Eyelet (Front).....	过线杆.....	4
29	07870366	Screw (1/8-44×5).....	螺丝.....	2
30	07870319	Screw (1/8-44×2.6).....	螺丝.....	4
31	07870333	Screw (9/64-40×6.7).....	螺丝.....	2
32	07870323	Washer (WF04).....	垫片.....	1
33	07873636	Tension Post Support C.Set.....	上线张力支柱座组件.....	1
35	07873631	SP Device C. Set.....	针线硅油组.....	1
36	07870334	SP Container C.Set.....	硅油储存槽组件.....	1
37	07873642A	Needle Thread Take-up.....	针线提线过线杆(四针六线).....	1
38	07873641A	Needle Bar Thread Eyelet.....	针柱顶过线杆(四针六线)....	1
39	07873637	Top Cover Thread Guide.....	上饰线导板.....	1
40	07873638	Screw (M4-0.7×4).....	螺丝.....	1
41	07871534	Spacer.....	隔片.....	2

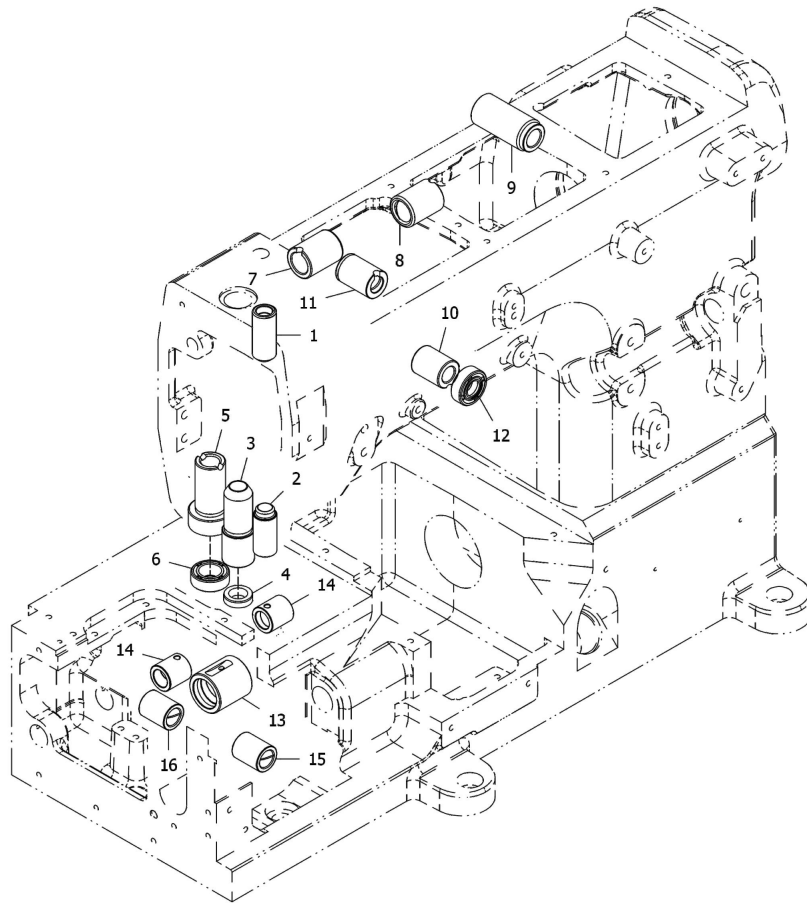
5

**MISCELLANEOUS THREAD EYELETS-4NEEDLE**

过线机构-四针六线

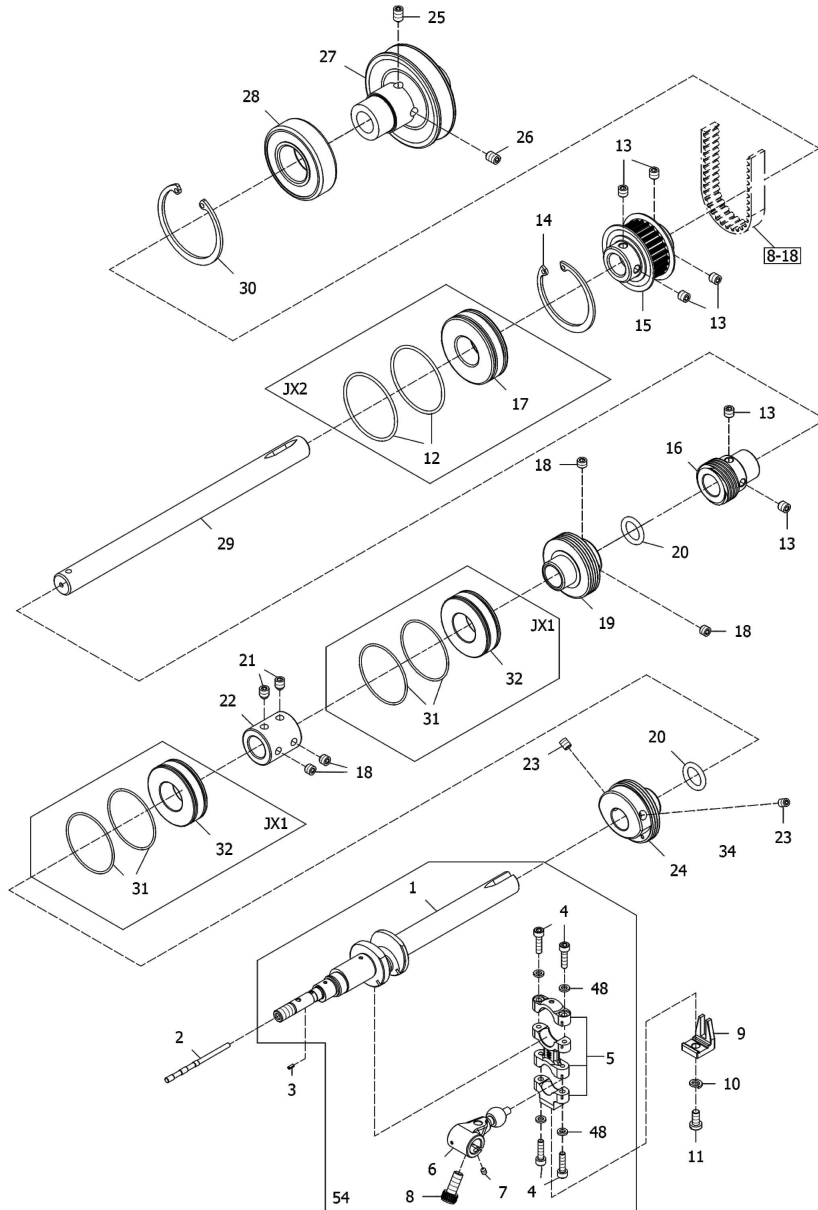
5

Ref.	Parts			Amt.
No.	No.	Description	品 名	Req.
42	07870529	Supplementray Thread Guide.....	上饰线辅助导板.....	1
43	07600543	Screw (M4-0.7×18).....	螺丝.....	1
44	07873622A	Needle Thread Eyelet.....	过线导片.....	1
45	07870365	Thread Eyelet .....	陶瓷过线孔.....	12
46	07873648	Needle Bar Thread Eyelet C.Set.....	针柱顶过线杆组(四针六线).....	1
47	07873647	Needle Thread Eyelet C.Set.....	过线导片组.....	1
48	07873649	Needle Thread Take-up C.Set.....	针线提线过线杆组(四针六线).....	1
49	07870368	Thread Eyelet Pipe C.Set (Long).....	过线导管组 (短).....	1
50	07870369	Thread Eyelet Pipe C.Set (Short).....	过线导管组 (长).....	2

**MISCELLANEOUS BUSHINGS****套管机构****6**

Ref.	Parts		Amt.	
<u>No.</u>	<u>No.</u>	<u>Description</u>	<u>品 名</u>	<u>Req.</u>
1	07870401	Needle Bar Bushing (Upper).....	针柱套管(上).....	1
2	07600602	Needle Bar Bushing (Lower).....	针柱套管(下).....	1
3	07600603	Presser Bar Bushing.....	压脚套管.....	1
4	07870404	Oil Seal.....	油封.....	1
5	07870405	Spreader Driving Bar Bushing.....	上饰线打线器套管.....	1
6	07870406	Oil Seal.....	油封.....	1
7	07870407	Spreader Driving Shaft Bushing (Left).....	上饰线打线器传动轴套管(左).....	1
8	07870408	Spreader Driving Shaft Bushing (Right).....	上饰线打线器传动轴套管(右).....	1
9	07870409	Foot Lifter Lever Bushing .....	抬压脚连杆套管.....	1
10	07870410	Needle Thread Take-up Bushing (Front).....	针线提线杆套管(前).....	1
11	07870411	Needle Thread Take-up Bushing (Rear).....	针线提线杆套管(后).....	1
12	07870432	Oil Seal.....	油封.....	1
13	07600613	Bushing.....	轴套.....	1
14	07600614	Bushing.....	轴套.....	2
15	07600615	Bushing.....	轴套.....	1
16	07600616	Bushing.....	轴套.....	1

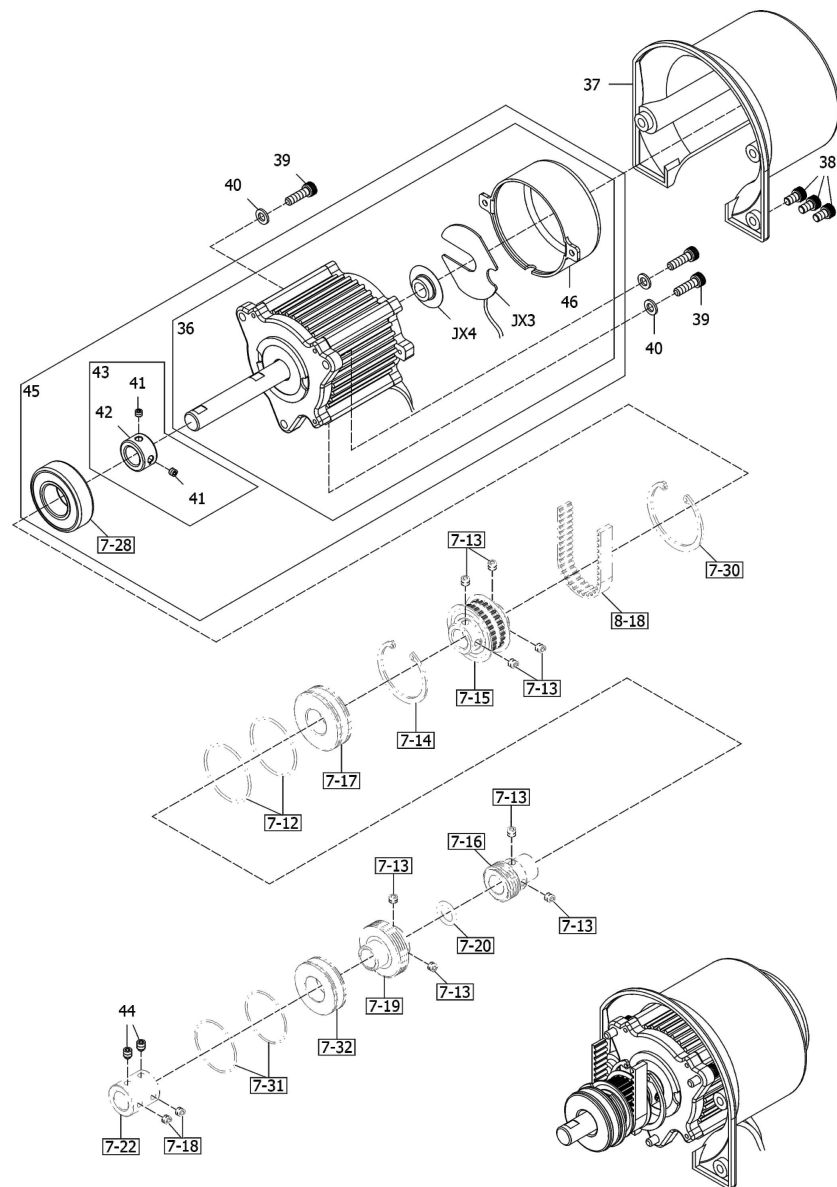




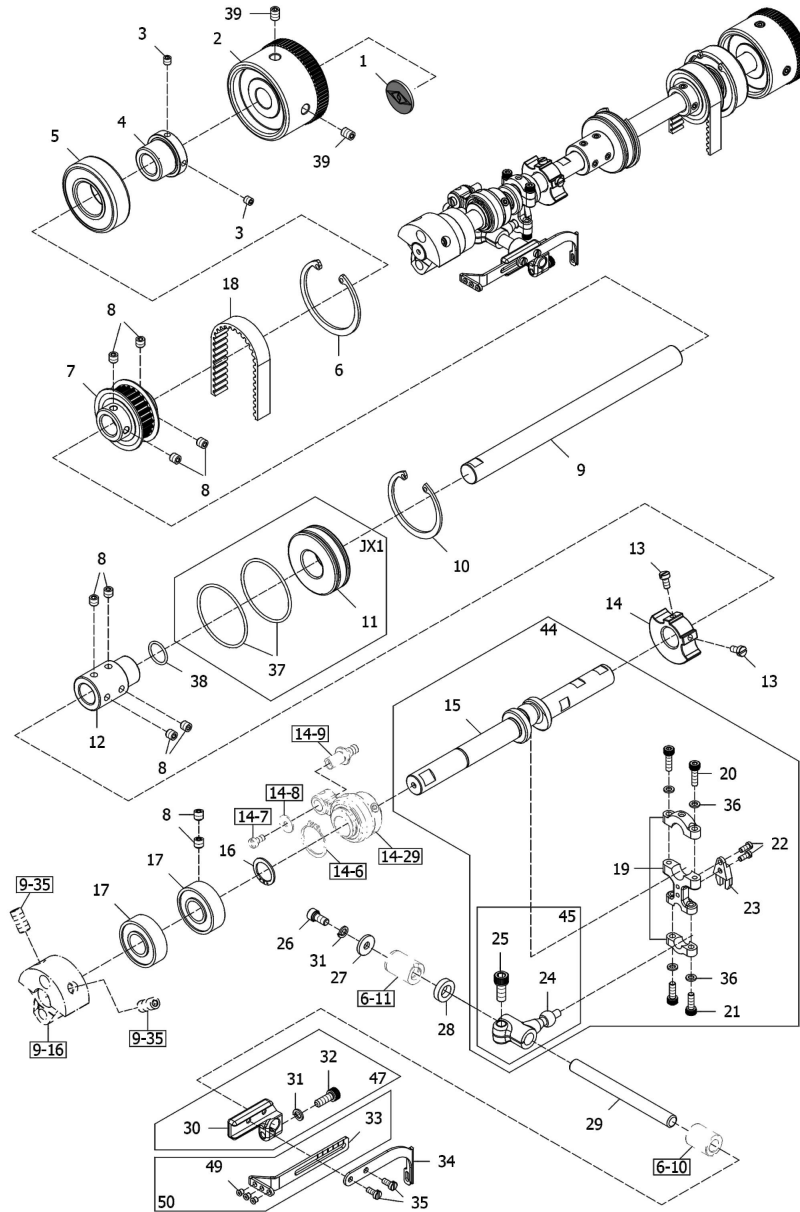
## MAIN SHAFT DRIVING MECHANISM

## 下主轴机构组

Ref.	Parts	Description	品 名	Amt.
No.	No.			Req.
1	07600701	Lower Crankshaft.....	下主轴.....	1
2	07600702	Adjusting Bar.....	调节棒.....	1
3	07600703	Roll Pin.....	辊子销.....	1
4	07600704	Screw (M3.5-0.6×14).....	螺丝.....	4
5	07600705	Connecting Rod C.Set.....	连杆组.....	1
6	07600706	Crank.....	曲柄组.....	1
7	07600707	Screw(M3-0.5×4).....	螺丝(尖底).....	1
8	07600708	Screw (M6-0.75×14).....	螺丝.....	1
9	07600709	Guide.....	曲柄导引块.....	1
10	07870633	Spring Washer .....	弹簧垫片.....	1
11	07600711	Screw (M4.5-0.75×9.5).....	螺丝.....	1
12	07870665	O-Ring.....	O型橡胶环.....	2
13	07870603	Screw (M6-1×6).....	螺丝.....	6
14	07870507	Retaining Ring.....	扣环.....	1
15	07600715	Main Shaft Sprocket (Lower) .....	下主轴链轮.....	1
16	07600716	Oil Pump Driving Worm.....	油泵传动螺杆.....	1
17	07870611	Ball Bearing (Middle).....	滚珠培林(中).....	1
18	07600718	Screw (M6-0.75×5).....	螺丝.....	4
19	07600719	Bushing.....	轴承衬套.....	1
20	07600720	O-Ring.....	O型油环.....	2
21	07600721	Screw (M6-0.75×8).....	螺丝(尖底).....	2
22	07600722	Joint.....	连接轴用衬套.....	1
23	07600231	Screw(M5-0.8×6).....	螺丝.....	2
24	07600724	Bushing.....	轴承衬套.....	1
25	07870502	Screw (M6-1×8).....	螺丝(尖底).....	1
26	07870503	Screw (M6-1×8).....	螺丝.....	1
27	07870501	Pulley.....	皮带轮.....	1
28	07870504	Ball Bearing (Right).....	滚珠培林(右).....	1
29	07600729	Lower Shaft (Right).....	下传动轴(右).....	1
30	07870505	Retaining Ring.....	扣环.....	1
31	07600731	O-Ring.....	O型橡胶环.....	4
32	07600732	Ball Bearing (Left).....	滚珠培林(左).....	2
36	07600736	Directly Driving Type Mini-Servo Motor.....	直驱式微型伺服马达.....	1
37	07870554	Mini-Servo Motor Cover.....	微型伺服马达盖.....	1
38	07870557	Screw(M6-1×10).....	螺丝.....	3
39	07870546	Screw (M6-1×20).....	螺丝.....	3
40	07870547	Washer(WF06).....	垫片.....	3
41	07870556	Screw(M5-0.8×4).....	螺丝.....	2
42	07870555	Bushing.....	轴套.....	1
43	07870567	Bushing C.Set.....	轴套组.....	1

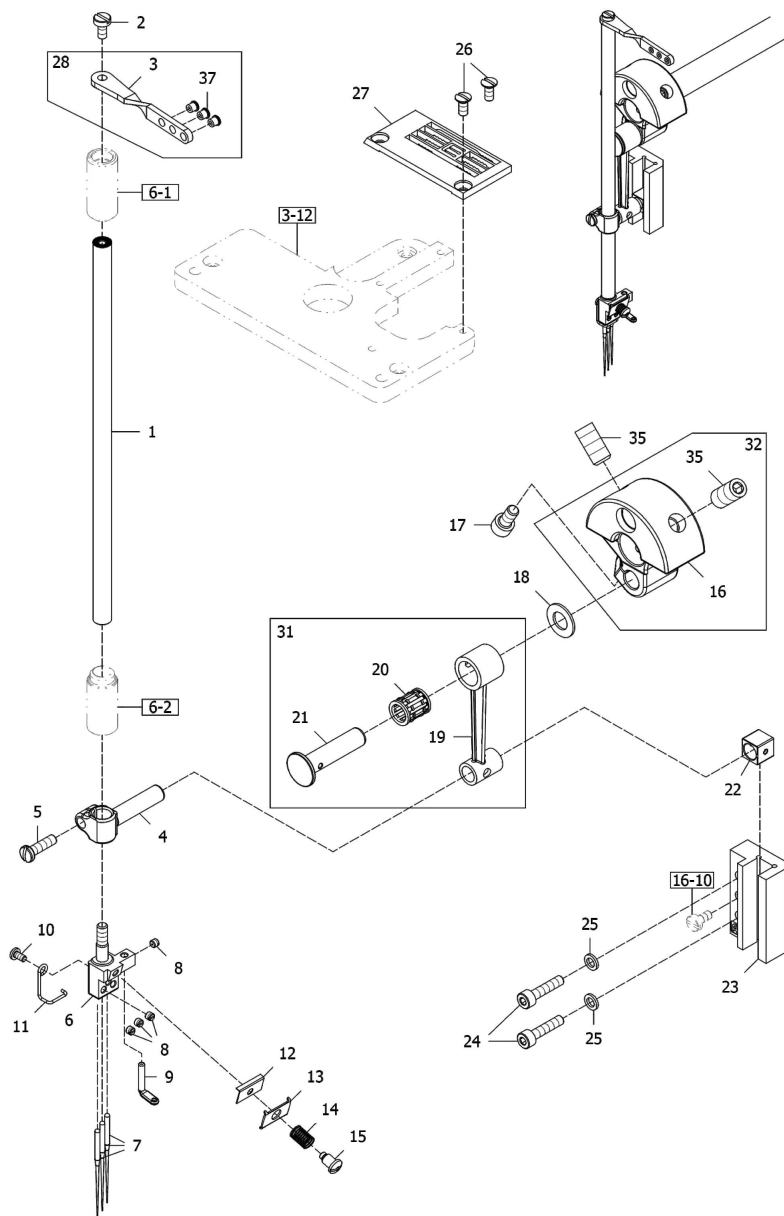
**MAIN SHAFT DRIVING MECHANISM****下主轴机构组****7**

Ref.	Parts			Amt.
No.	No.	Description	品 名	Req.
44	07600744	Screw(M6-0.75×6).....	螺丝(平底).....	2
45	07600745	Directly Driving Type Mini-Servo Motor C.Set	直驱式微型伺服马达组.....	1
46	07600746	Motor Cover.....	绿色盖子.....	1
48	07600748	Washer.....	垫片.....	4
54	07600754	Lower Crankshaft C.Set.....	下主轴组.....	1
JX1	JX060701	Bearing C.Set.....	培林组件.....	2
JX2	JX070601	Bearing C.Set.....	培林组件.....	1
JX3	JX060703	Motor Detector.....	马达电子板.....	1
JX4	JX060704	Phase Detector.....	相位检知板.....	1



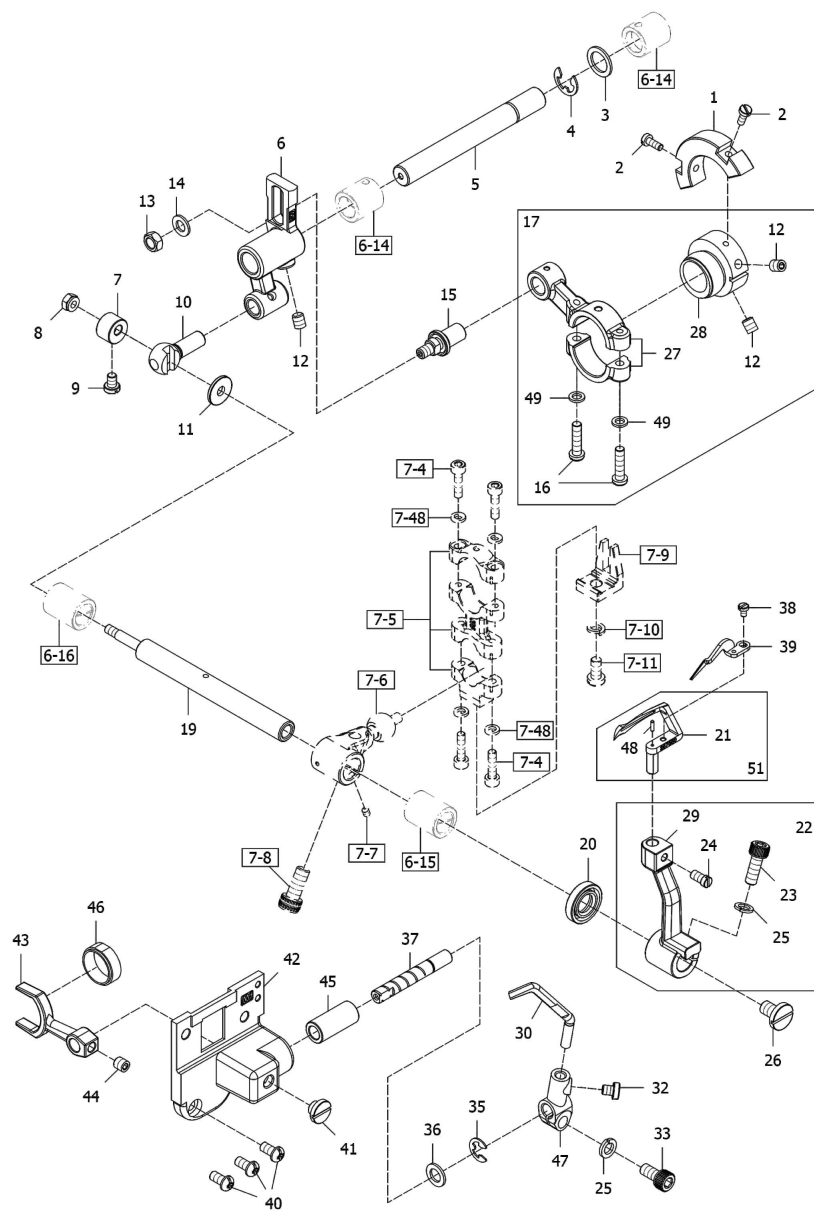
# UPPER SHAFT & NEEDLE THREAD TAKE-UP MECHANISM 上主轴及针线提线诸元

Ref. No.	Parts No.	Description	品 名	Amt. Req.
1	07870604	Handwheel Mark.....	手推轮商标铭牌.....	1
2	07600802	Handwheel.....	手推轮.....	1
3	07870648	Screw (M5-0.8×5).....	螺丝.....	2
4	07870647	Handwheel Adapter.....	手推轮转轴套.....	1
5	07870504	Ball Bearing.....	滚珠培林.....	1
6	07870505	Retaining Ring.....	扣环.....	1
7	07870608	Upper Shaft Sprocket.....	上主轴链轮.....	1
8	07870543	Screw (M6-1×6).....	螺丝.....	10
9	07600809	Upper Shaft (Right).....	上传动轴(右).....	1
10	07870507	Retaining Ring.....	扣环.....	1
11	07870611	Ball Bearing.....	滚珠培林.....	1
12	07870612	Upper Shaft Joint.....	上主轴接头.....	1
13	07870125	Screw (M4-0.7×8).....	螺丝.....	2
14	07870511	Counterweight (Small).....	平衡配重凸轮.....	1
15	07870615	Upper Crankshaft.....	上曲轴.....	1
16	07870618	Retaining Ring.....	扣环.....	1
17	07870619	Ball Bearing.....	滚珠培林.....	2
18	07600818	Timing Belt.....	同步传动皮带.....	1
19	07870621	Connecting Rod.....	连杆.....	1
20	07870622	Screw (M4-0.7×14).....	螺丝.....	2
21	07870623	Screw (M4-0.7×12).....	螺丝.....	2
22	07870624	Screw (1/8-44×7.5).....	螺丝.....	2
23	07870625	Guide Fork.....	叉形导片.....	1
24	07870626	Driving Lever.....	传动杆.....	1
25	07870627	Screw (M6-1×15).....	螺丝.....	1
26	07870628	Screw (M5-0.8×10).....	螺丝.....	1
27	07870629	Washer.....	垫片.....	1
28	07870630	Spacer.....	衬套.....	1
29	07870631	Driving Shaft.....	传动轴.....	1
30	07870632	Bracket.....	托架.....	1
31	07870633	Spring Washer.....	弹簧垫片.....	2
32	07870634	Screw (M5-0.8×14).....	螺丝.....	1
33	07870635A	Needle Thread Take-up.....	针线提线过线杆.....	1
34	07870636	Top Cover Thread Take-up.....	上饰线提线过线杆.....	1
35	07870637	Screw (M3.5-0.6×6).....	螺丝.....	2
36	07870650	Washer (WF01).....	垫片.....	4
37	07870665	O-Ring.....	O型橡胶环.....	2
38	07870664	O-ring.....	O环.....	1
39	07870503	Screw(M6-1×8).....	螺丝.....	2
44	07870658	Upper Crankshaft C.Set.....	上主轴组.....	1
45	07870668	Driving Lever C.Set.....	传动杆组.....	1
47	07870661	Bracket C.Set.....	托架组.....	1
49	07870365	Thread Eyelet.....	陶瓷过线孔.....	3
50	07870667	Needle Thread Take-up C.Set.....	针线提线过线杆组.....	1
JX1	JX070601	Bearing C.Set.....	培林组件.....	1

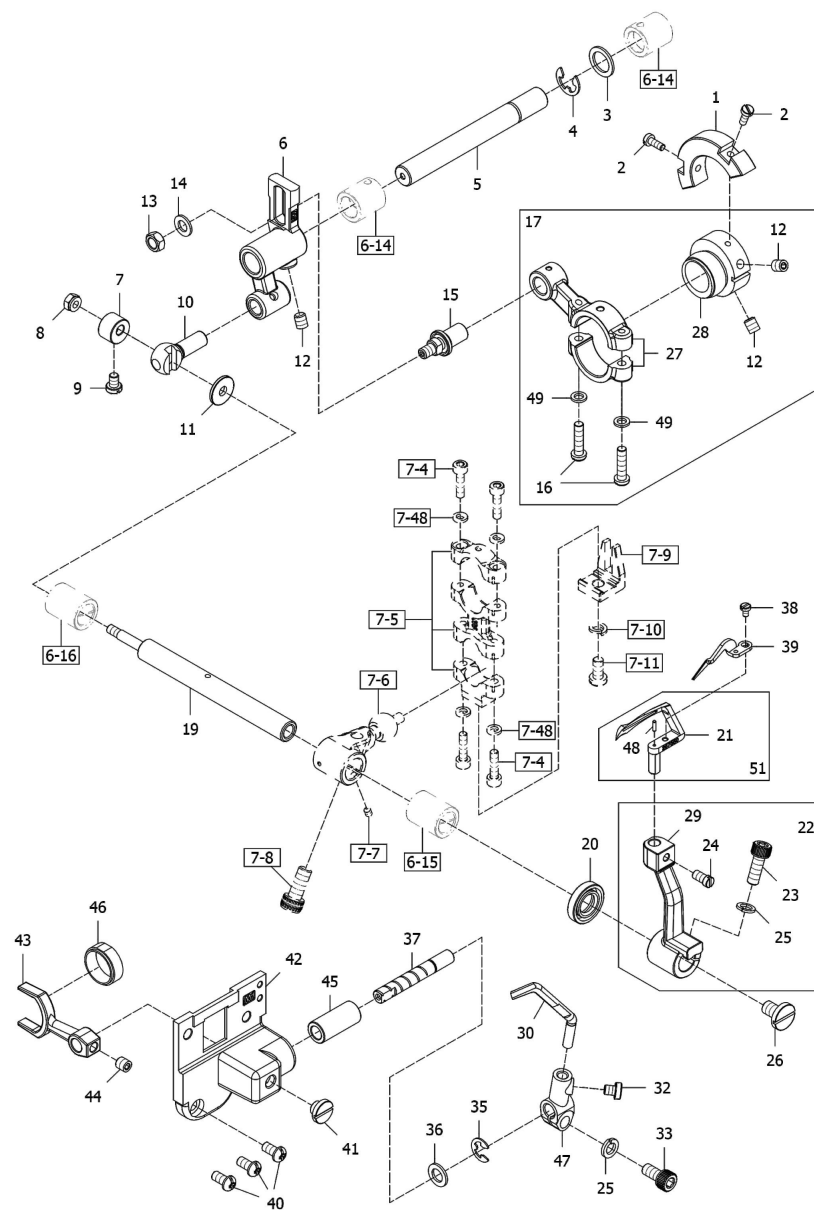
**NEEDLE BAR MECHANISM****针柱机构**

Ref. No.	Parts No.	Description	品 名	Amt. Req.
1	07600901	Needle Bar.....	针柱.....	1
2	07870702	Screw (9/64-40×7.5).....	螺丝.....	1
3	07870703A	Needle Bar Thread Eyelet.....	针柱顶过线杆(三针五线用).....	1
4	07870705	Needle Bar Bracket.....	针柱托架.....	1
5	07870706	Screw (M4-0.7×10).....	螺丝.....	1
6	★	Needle Clamp.....	针镙.....	1
7	07870708	Needle (UY128 GAS).....	机针.....	3
8	07870319	Screw (1/8-44×2.6).....	锁针螺丝.....	4
9	07870710	Top Cover Thread Eyelet.....	上饰线过线片.....	1
10	07870735	Screw (M2.6-0.45×5).....	螺丝.....	1
11	07870736	Needle Thread Guiding Wire.....	针线过线铁线.....	1
12	07870737	Thread Retainer Disc Support.....	针线张力调整压板固定座(小)...	1
13	07870738	Needle Thread Retainer Dice.....	针线张力调整压板(小).....	1
14	07870739	Needle Thread Retainer Spring.....	针线张力调整弹簧.....	1
15	07870740	Screw (1/8-44×2.5).....	螺丝.....	1
16	07870714	Counterweight.....	平衡配重凸轮.....	1
17	07870628	Screw (M5-0.8×10).....	螺丝.....	1
18	07870716	Connecting Rod Ring.....	连杆套环.....	1
19	07870718	Connecting Rod.....	连杆.....	1
20	07870719	Roller Bearing.....	培林.....	1
21	07870720	Connecting Rod Pin.....	连杆插销.....	1
22	07870722	Slide Block.....	针柱定位滑块.....	1
23	07870723	Needle Bar Guide.....	针柱定位滑槽.....	1
24	07870724	Screw (M4-0.7×18).....	螺丝.....	2
25	07870650	Washer (WF01).....	垫片.....	2
26	07600926	Screw (9/64-40×9).....	螺丝.....	2
27	★	Stitch Plate.....	针板.....	1
28	07870750	Needle Bar Thread Eyelet C. Set.....	针柱顶过线杆组(三针五线用).....	1
31	07870717	Connecting Rod C. Set.....	连杆组.....	1
32	07870747	Counterweight C.Set.....	平衡配重凸轮组.....	1
35	07870746	Screw (M8-1.25×16).....	螺丝.....	2
37	07870365	Thread Eyelet .....	陶瓷过线孔.....	3

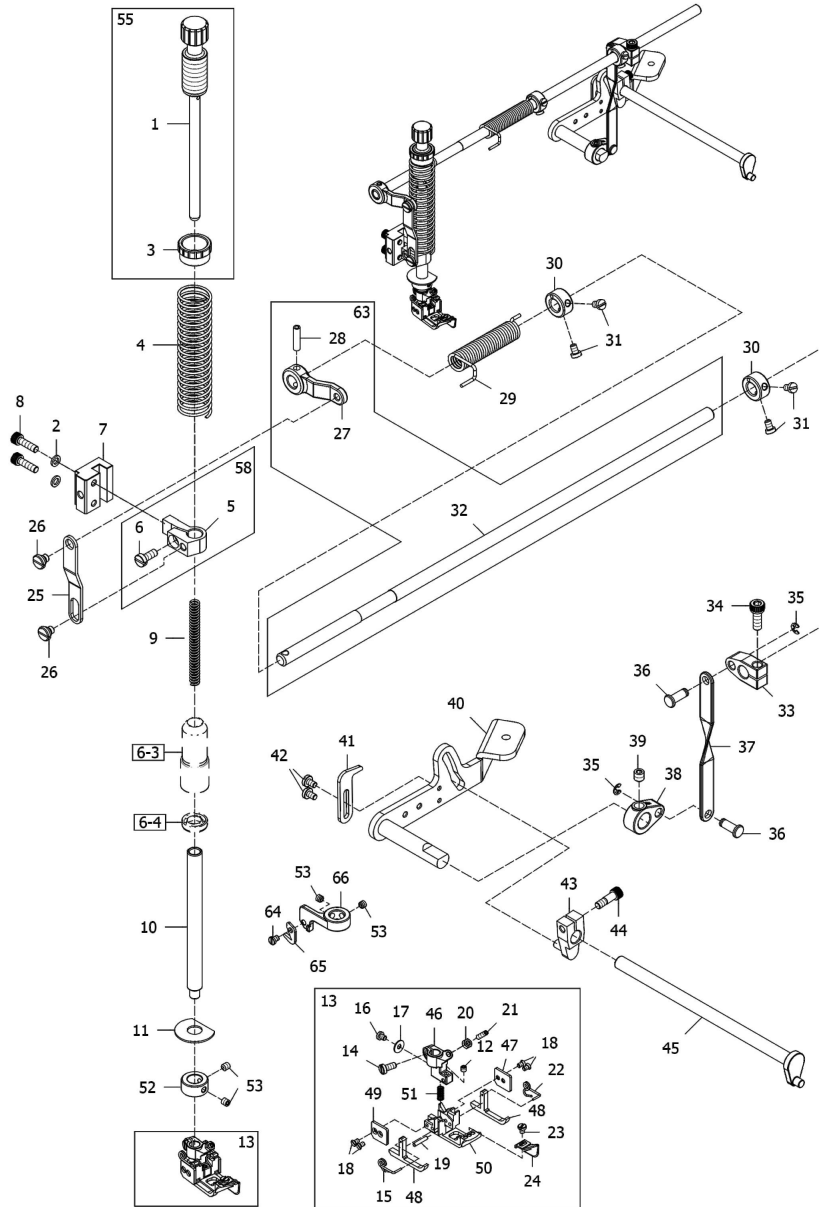
★请参照附件一，附件二【标准规格件】

**NEEDLE GUARD & LOOPER DRIVING MECHANISM****顶针片及下勾针驱动机构****10**

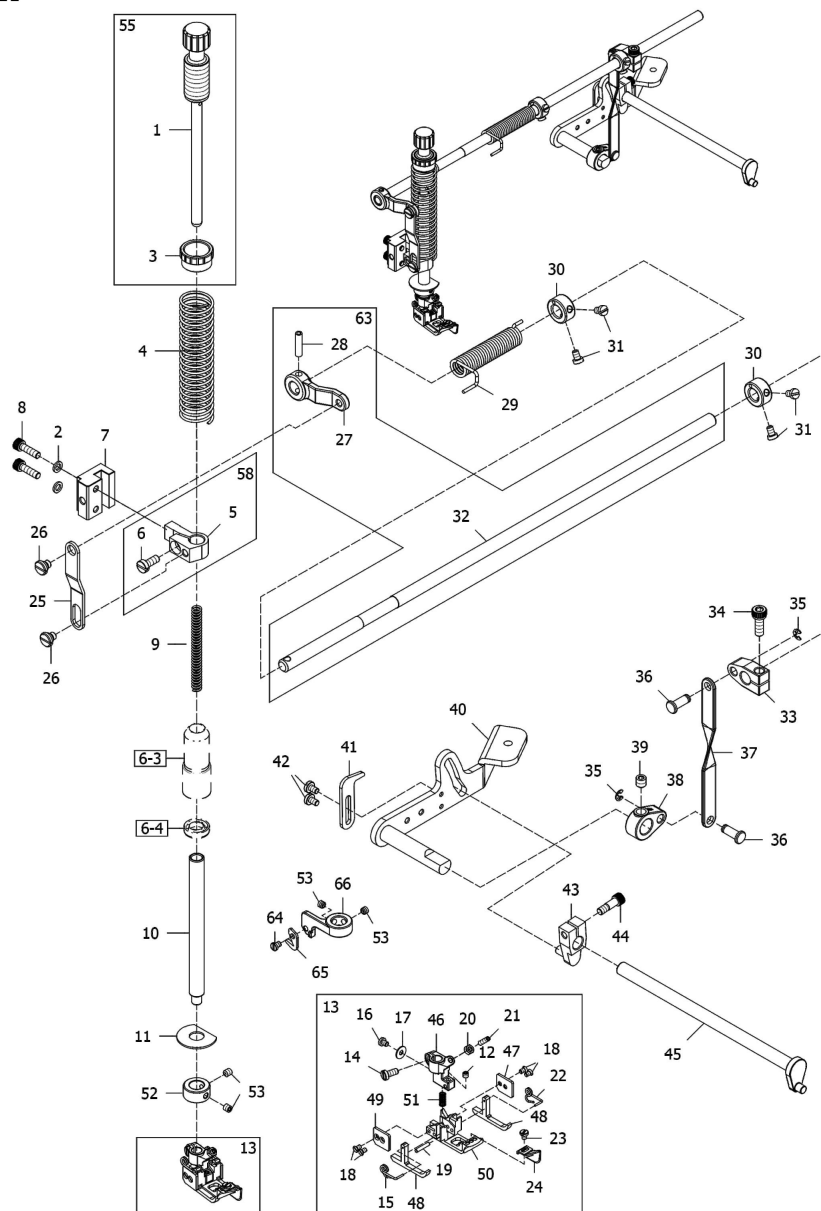
Ref.	Parts	Description	品 名	Amt.
No.	No.			Req.
1	07601001	Balance Weight.....	平衡锤.....	1
2	07601002	Screw (M3-0.5×7.8).....	螺丝.....	2
3	07601003	Washer.....	垫片.....	1
4	07601004	C-Retaining Ring.....	C型扣环.....	1
5	07601005	Shaft.....	轴.....	1
6	07601006	Crank Shaft(Upper).....	曲轴.....	1
7	07601007	Collar.....	轴环.....	1
8	07601008	Nut.....	螺帽.....	1
9	07601009	Screw (M4-0.7×6).....	螺丝.....	1
10	07601010	Presser Bar.....	传动销.....	1
11	07601011	Washer.....	垫片.....	1
12	07600231	Screw(M5-0.8×6).....	螺丝.....	3
13	07601013	Nut.....	螺帽.....	1
14	07871148	Washer.....	垫片.....	1
15	07601015	Pin.....	插销.....	1
16	07600223	Screw (M4-0.7×16).....	螺丝.....	2
17	07601017	Connecting Rod C. Set.....	连杆组.....	1
19	07601019	Shaft.....	勾针座用轴.....	1
20	07601020	Oil Seal.....	油封.....	1
21	07601021	Looper.....	勾针.....	1
22	07601022	Looper Holder C.Set.....	勾针座组.....	1
23	07870634	Screw(M5-0.8x14).....	螺丝.....	1
24	07601024	Screw(M4-0.7x7).....	螺丝.....	1
25	07870633	Spring Washer.....	弹簧垫片.....	2
26	07601026	Screw(M6-0.75x10).....	螺丝.....	1
27	07601027	Connecting Rod.....	连杆.....	1
28	07601028	Eccentric.....	偏心轮.....	1
29	07601029	Looper Holder.....	勾针座.....	1
30	07601030	Needle Guard (Rear).....	后针受器.....	1
32	07601032	Screw (M4-0.7×4.5).....	螺丝.....	1
33	07870628	Screw (M5-0.8×10).....	螺丝.....	1
35	07601035	C-Retaining Ring.....	C型扣环.....	1
36	07601036	Washer.....	垫片.....	1
37	07601037	Shaft.....	轴.....	1
38	07601038	Screw(M2.5-0.45×3.8).....	螺丝.....	1
39	07601039	Needle Guard (Front).....	前针受器.....	1
40	07600310	Screw (M4-0.7×8).....	螺丝.....	3
41	07601041	Screw (M6-0.75×3.5).....	螺丝.....	1
42	07601042	Front Cover.....	前盖.....	1
43	07601043	Crank Shaft(Upper).....	曲轴.....	1

**NEEDLE GUARD & LOOPER DRIVING MECHANISM****顶针片及下勾针驱动机构 10**

Ref.	Parts			Amt.
No.	No.	Description	品 名	Req.
44	07870648	Screw (M5-0.8×5).....	螺丝.....	1
45	07601045	Bushing.....	套筒.....	1
46	07601046	Bushing.....	O型套筒.....	1
47	07601047	Needle Guard (Rear) Holder.....	护针座.....	1
48	07601048	Pin.....	插销.....	1
49	07870650	Washer (WF01).....	垫片.....	2
51	07601051	Looper C.Set.....	勾针组.....	1

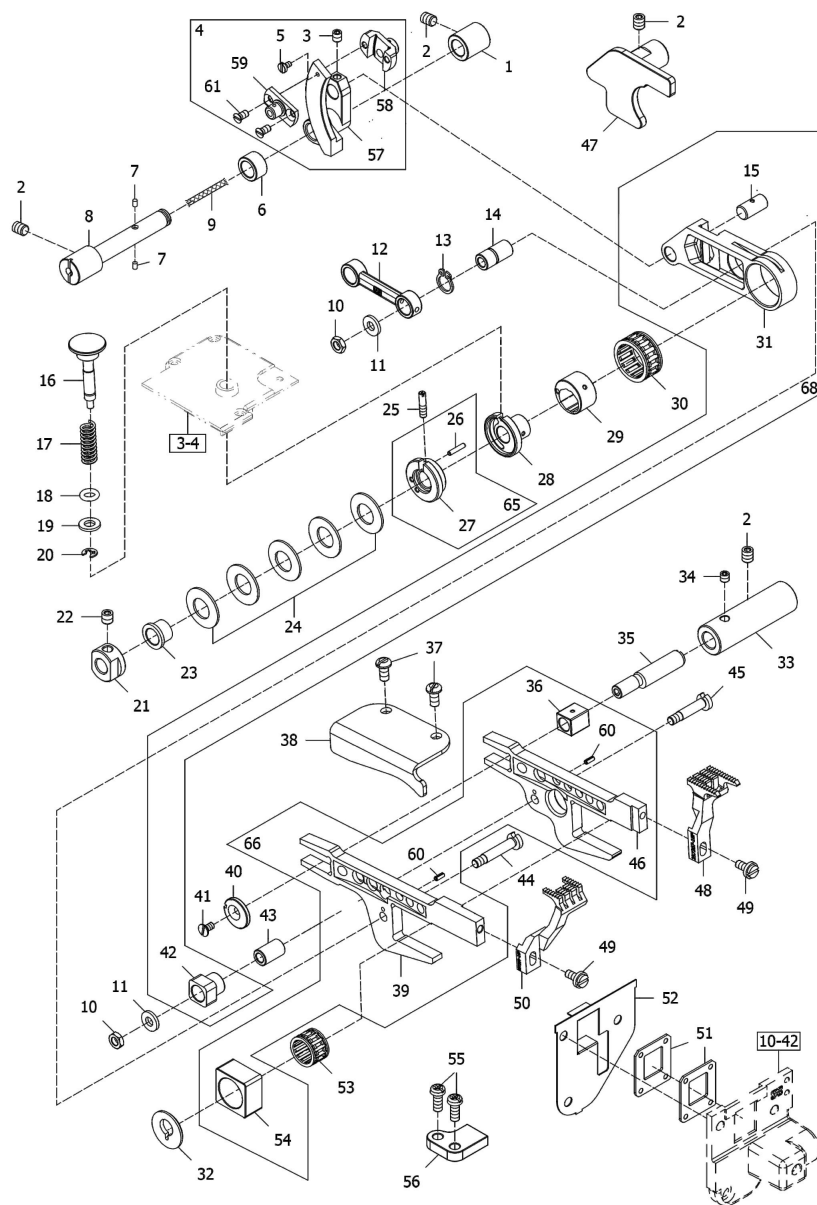
**PRESSER FOOT MECHANISM****压脚机构**

Ref. No.	Parts No.	Description	品 名	Amt. Req.
1	07870801	Presser Spring Regulator.....	压脚弹簧调节器.....	1
2	07870650	Washer (WF01).....	垫片.....	2
3	07870803	Lock Nut.....	并紧螺帽.....	1
4	07870804	Presser Bar Spring (Outer).....	压脚棒状弹簧 (外).....	1
5	07870805	Presser Bar Connecting Bracket.....	压脚推杆连接架.....	1
6	07870806	Screw (11/64-40×10.5).....	螺丝.....	1
7	07870807	Presser Bar Guide.....	压脚推杆导架.....	1
8	07870622	Screw (M4-0.7×14).....	螺丝.....	2
9	07870809	Presser Bar Spring (Inner).....	压脚棒状弹簧 (内).....	1
10	07601110	Presser Bar.....	压脚推杆.....	1
11	07870811	Oil Protector Ring.....	止油环.....	1
12	07870880	Screw (1/8-44×3).....	螺丝(平底).....	1
13	07870814	Presser Foot C.Set.....	压脚组.....	1
14	07870815	Screw (9/64-40×8).....	螺丝.....	1
15	07870816	Presser Foot Spring (Left).....	压脚弹簧(左).....	1
16	07870817	Screw (1/8-44×3).....	螺丝.....	1
17	07870818	Washer.....	垫片.....	1
18	07870819	Screw (3/32-56×4).....	螺丝.....	4
19	07870820	Presser Foot Hinge Pin.....	压脚锁门插销.....	1
20	07870822	Lock Nut.....	保险螺帽.....	1
21	07870823	Adjusting Screw (1/8-44×10).....	可调螺丝.....	1
22	07870824	Presser Foot Spring (Right).....	压脚弹簧(右).....	1
23	07870825	Screw (3/32-56×3).....	螺丝.....	1
24	07870826	Fabric Guide (Long).....	压脚舌 (长).....	1
25	07870827	Lifter Link.....	提升连杆.....	1
26	07870828	Screw (3/16-32×3.5).....	螺丝.....	2
27	07870829	Lifter Link Lever.....	提升连结拉柄.....	1
28	07870830	Fastener Pin.....	固定销.....	1
29	07870831	Lifter Spring.....	提升弹簧.....	1
30	07870832	Collar (8×16×8mm).....	轴环.....	2
31	07870833	Screw (M4.5-0.75×5.5).....	螺丝.....	4
32	07870834	Lifter Shaft.....	压脚提升主轴.....	1
33	07870836	Intermediate Lever.....	中间拉柄.....	1
34	07870634	Screw (M5-0.8×14).....	螺丝.....	1
35	07870838	Retaining Ring.....	扣环.....	2
36	07870839	Connecting Pin.....	连结销.....	2
37	07870840	Connecting Plate.....	连结拉板.....	1
38	07870841	Lifter Lever (Small).....	提升拉柄(小).....	1
39	07870543	Screw (M6-1×6).....	螺丝.....	1
40	07870843	Lifter Lever.....	提升拉柄.....	1

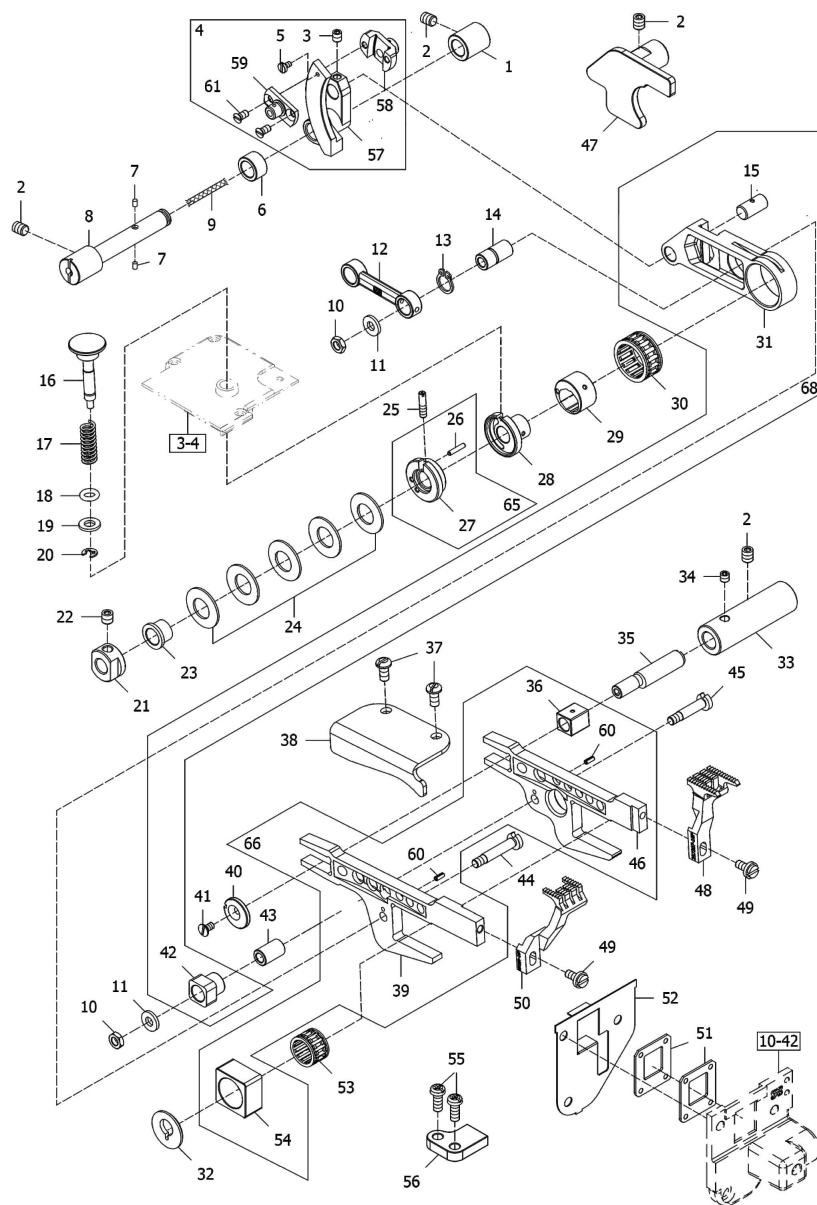
**PRESSER FOOT MECHANISM****压脚机构**

Ref.	Parts			Amt.
No.	No.	Description	品 名	Req.
41	07870844	Lifter Lever Stop.....	提升拉柄止块.....	1
42	07870845	Screw (9/64-40×5.5).....	螺丝.....	2
43	07870846	Tension Release Lever.....	拉力释放杠杆.....	1
44	07870847	Screw (11/64-40×14).....	螺丝.....	1
45	07601145	Tension Release Shaft.....	拉力释放轴.....	1
46	07870872	Presser Head.....	压脚头.....	1
47	07870873	Fender Plate.....	挡片.....	1
48	07870875	Sideways Presser Plate.....	侧边压板.....	2
49	07870877	Fender Plate.....	挡片.....	1
50	07870878	Presser Foot Noumenon .....	压脚本体.....	1
51	07870856	Presser Foot Spring.....	压脚弹簧.....	1
52	07870812	Collar.....	轴环.....	1
53	07870835	Screw (M4-0.7×3).....	螺丝.....	4
55	07870852	Presser Spring Regulator C.Set.....	压脚弹簧调节器组.....	1
58	07870853	Presser Bar Connection Braxket C.Set.....	压脚推杆连结组.....	1
63	07870867	Lifter Link Lever C.Set.....	提升连结拉杆组.....	1
64	07870821	Screw (1/8-44x4).....	螺丝.....	1
65	07870850	Cutter.....	割线刀.....	1
66	07601166	Cutter Holder.....	割线刀座.....	1

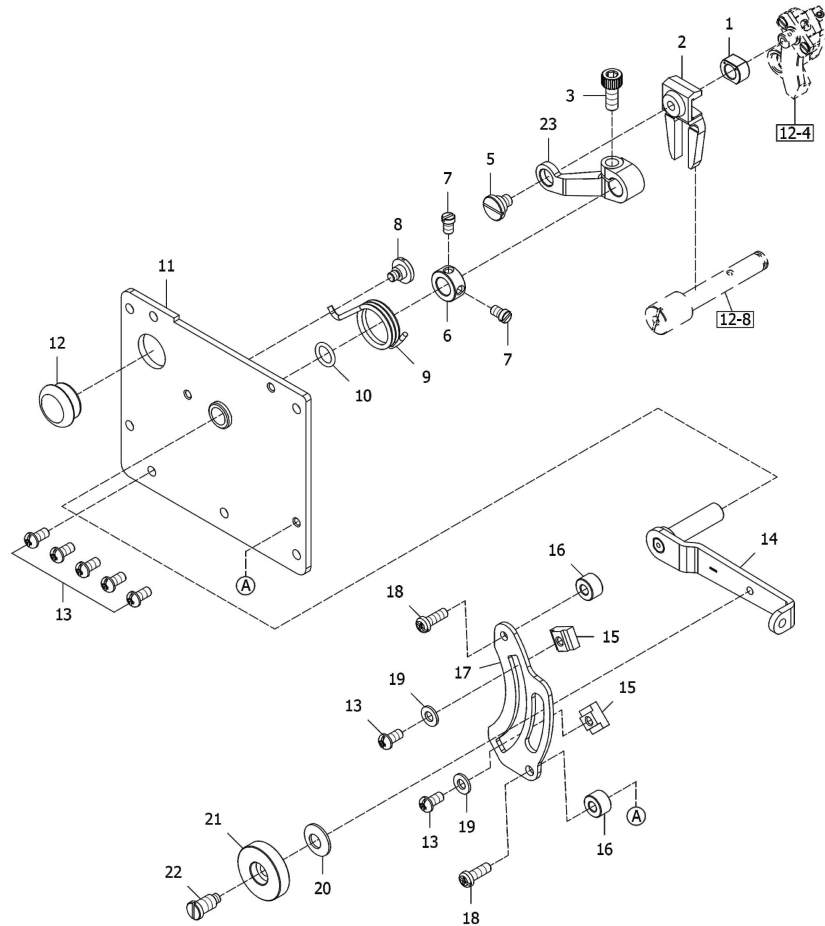


**FEED DRIVING MECHANISM****送料具驱动机构**

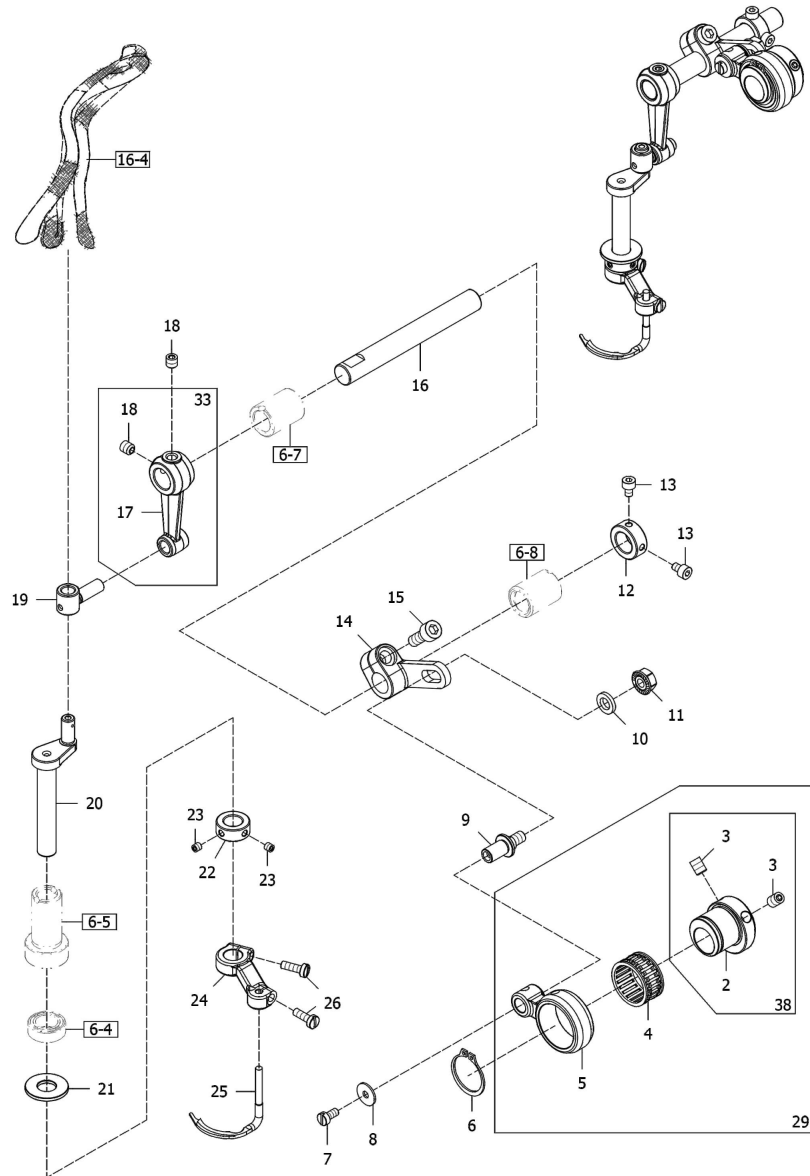
Ref. No.	Parts No.	Description	品 名	Amt. Req.
1	07601201	Spacer.....	衬套.....	1
2	07600231	Screw(M5-0.8×6).....	螺丝.....	4
3	07601203	Screw(M4-0.7×5).....	螺丝(尖底).....	1
4	07601204	Crank C.Set.....	曲柄组.....	1
5	07601038	Screw(M2.5-0.45×3.8).....	螺丝.....	1
6	07601206	Spacer.....	隔片.....	1
7	07870259	Cotton Thread.....	棉线.....	2
8	07601208	Shaft.....	轴.....	1
9	07601209	Oil Wick.....	给油线.....	1
10	07601210	Nut.....	螺帽.....	2
11	07601211	Washer.....	垫片.....	2
12	07601212	Connecting Rod.....	连杆.....	1
13	07601213	Retaining Ring.....	扣环.....	1
14	07601214	Spacer.....	衬套.....	1
15	07601215	Pin.....	插销.....	1
16	07601216	Pin.....	插销.....	1
17	07601217	Spring.....	弹簧.....	1
18	07601218	O-Ring.....	O型油环.....	1
19	07871148	Washer.....	垫片.....	1
20	07870838	C-Retaining Ring.....	C型扣环.....	1
21	07601221	Nut.....	下主轴螺帽.....	1
22	07870648	Screw (M5-0.8×5).....	螺丝.....	1
23	07601223	Spacer.....	横片隔离套环.....	1
24	07601224	Spring.....	横片.....	5
25	07601225	Bolt.....	螺栓.....	1
26	07601226	Pin.....	插销.....	1
27	07601227	Eccentric Retainer.....	偏心定位零件.....	1
28	07601228	Regulator.....	针目调节器.....	1
29	07601229	Eccentric.....	偏心轴衬.....	1
30	07601230	Roller Bearing.....	滚针轴承.....	1
31	07601231	Link/Main Feed.....	主送布齿台连杆.....	1
32	07601232	Washer.....	垫片.....	1
33	07601233	Bushing.....	衬套.....	1
34	07870229	Screw (M4-0.7×4).....	螺丝.....	1
35	07601235	Eccentric Pin.....	偏心插销.....	1
36	07601236	Slide.....	滑块.....	1
37	07601237	Screw (M4-0.7×8).....	螺丝.....	2
38	07601238	Guide (Left).....	左送布齿台案内.....	1
39	07601239	Differential Feed Bar.....	插动送布齿台.....	1
40	07601240	Washer.....	垫片.....	1

**FEED DRIVING MECHANISM****送料具驱动机构**

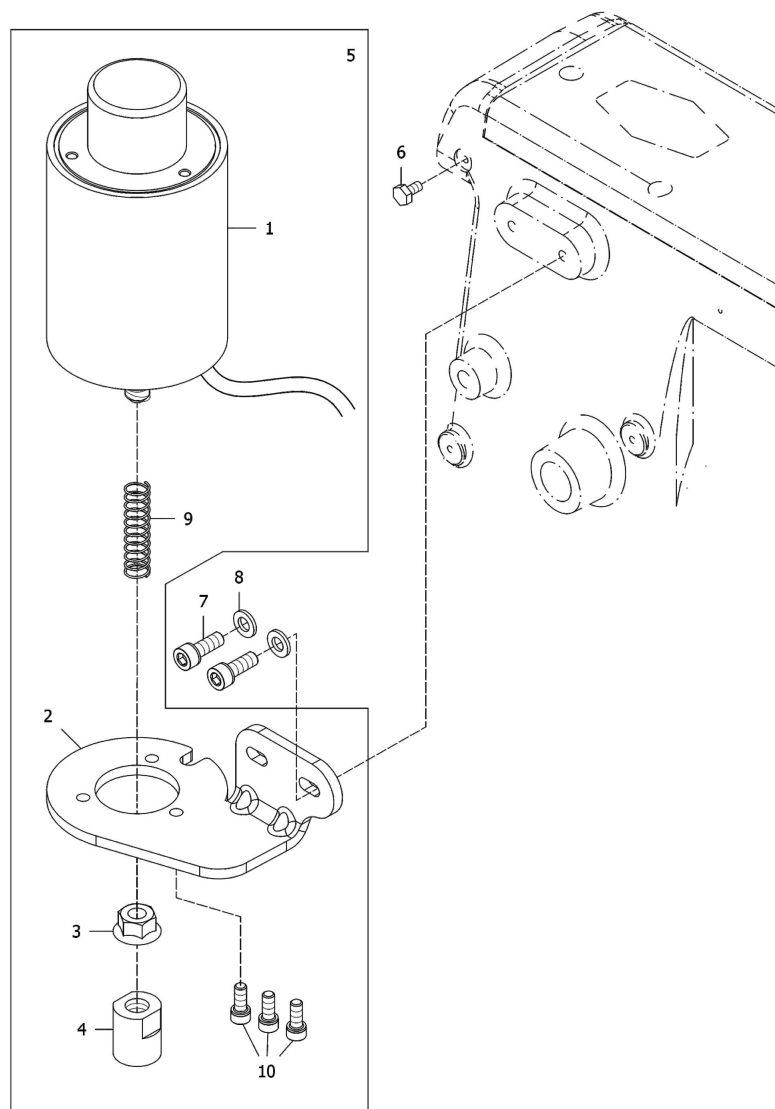
Ref. No.	Parts No.	Description	品名	Amt. Req.
41	07601241	Screw (M3-0.5×6).....	螺丝.....	1
42	07601242	Slide .....	滑块.....	1
43	07601243	Bushing.....	衬套.....	1
44	07601244	Screw (M4-0.7×6).....	段付螺丝.....	1
45	07601245	Screw (M4-0.7×6).....	段付螺丝.....	1
46	07601246	Main Feed Bar.....	主送布齿台.....	1
47	07601247	Guide (Right).....	右送布齿台案内.....	1
48	07601248	Main Feed Dog.....	主送布齿.....	1
49	07601249	Screw(9/64"-40×7.5).....	螺丝.....	2
50	07601250	Differential Feed Dog.....	插动送布齿.....	1
51	07601251	Oil Shield .....	送布齿台刮油片.....	2
52	07601252	Cover .....	送布齿台防油盖.....	1
53	07601253	Roller Bearing.....	滚针轴承.....	1
54	07601254	Slide .....	滑块.....	1
55	07600233	Screw (M4-0.7×10).....	螺丝.....	2
56	07601256	Guide (Lower) .....	下送布齿台案内.....	1
57	07601257	Crank.....	曲柄.....	1
58	07601258	Crank.....	曲柄.....	1
59	07601259	Crank.....	曲柄.....	1
60	07601260	Roll Pin .....	辊子销.....	2
61	07601261	Screw (1/8"-44×5.5).....	螺丝.....	2
65	07601265	Eccentric Retainer C.Set.....	偏心定位零件组.....	1
66	07601266	Feed Bar C.Set.....	送布齿组.....	1
68	07601268	Link/Main Feed C.Set.....	主送布齿台连杆组.....	1

**FEED DRIVING CONTROL MECHANISM****送料具驱动控制机构**

Ref.	Parts			13
No.	No.	Description	品 名	Req.
1	07601301	Slide .....	滑块 .....	1
2	07601302	Guide/Block.....	滑块案内 .....	1
3	07601303	Screw (M5-0.8×12).....	螺丝 .....	1
5	07601305	Screw (M5-0.8×3.9).....	段付螺丝 .....	1
6	07601306	Collar.....	轴环 .....	1
7	07601307	Screw (M4-0.7×6).....	螺丝 .....	2
8	07601308	Screw (M4-0.7×3.5).....	段付螺丝 .....	1
9	07601309	Spring .....	弹簧 .....	1
10	07601310	O-Ring .....	O型油环 .....	1
11	07601311	Bracket.....	插动调节用侧板 .....	1
12	07601312	Oil Seal Cap.....	孔塞 .....	1
13	07600310	Screw (M4-0.7×8).....	螺丝 .....	7
14	07601314	Lever .....	插动调节提把 .....	1
15	07601315	Stopper.....	定位环 .....	2
16	07601316	Spacer.....	隔环 .....	2
17	07601317	Graduations.....	刻度板 .....	1
18	07600308	Screw (M4-0.7×12).....	螺丝 .....	2
19	07870323	Washer (WF04).....	垫片 .....	2
20	07601320	Conical Spring Washer .....	锥形弹簧垫圈 .....	1
21	07601321	Thumb Nut.....	调节转轮 .....	1
22	07601322	Screw (M6-0.75×9.1,M4-0.5x3.2).....	段付螺丝 .....	1
23	07601323	Lever.....	摇臂 .....	1

**SPREADER MECHANISM****上饰线驱动机构**

Ref. No.	Parts No.	Description	品 名	Amt. Req.
2	07870902	Eccentric.....	偏心轮.....	1
3	07870503	Screw (M6-1×8).....	螺丝.....	2
4	07870904	Roller Bearing.....	滚珠培林.....	1
5	07870905	Connecting Rod.....	连杆.....	1
6	07870906	Retaining Ring.....	扣环.....	1
7	07870125	Screw (M4-0.7×8).....	螺丝.....	1
8	07870908	Washer.....	垫片.....	1
9	07870909	Adjusting Lever Pin.....	拉柄可调式插销.....	1
10	07870547	Washer(WF06).....	垫片.....	1
11	07870911	Nut (M6-1.0).....	螺帽.....	1
12	07870912	Collar (12×20×8mm).....	轴环.....	1
13	07870913	Screw (M4-0.7×6).....	螺丝.....	2
14	07870914	Adjusting Lever.....	可调式拉柄.....	1
15	07870915	Screw (M6-1×16).....	螺丝.....	1
16	07870916	Driving Shaft.....	主动轴.....	1
17	07870917	Rocking Arm.....	摇臂.....	1
18	07870543	Screw (M6-1×6).....	螺丝.....	2
19	07870919	Rocking Pin.....	支点销.....	1
20	07870920	Spreader Bar.....	延展臂.....	1
21	07870921	Bushing Ring.....	衬环.....	1
22	07870922	Collar (10×18×7mm).....	轴环.....	1
23	07870229	Screw (M4-0.7×4).....	螺丝.....	2
24	07870924	Spreader Holder.....	上勾固定座.....	1
25	07870925	Spreader.....	上勾.....	1
26	07870102	Screw (M4-0.7×12).....	螺丝.....	2
29	07870929	Eccentric Connecting Rod Bearing C.Set.....	偏心轮连杆培林组.....	1
33	07870933	Rocking Arm C.Set.....	摇臂组.....	1
38	07870930	Eccentric C.Set.....	偏心轮组.....	1

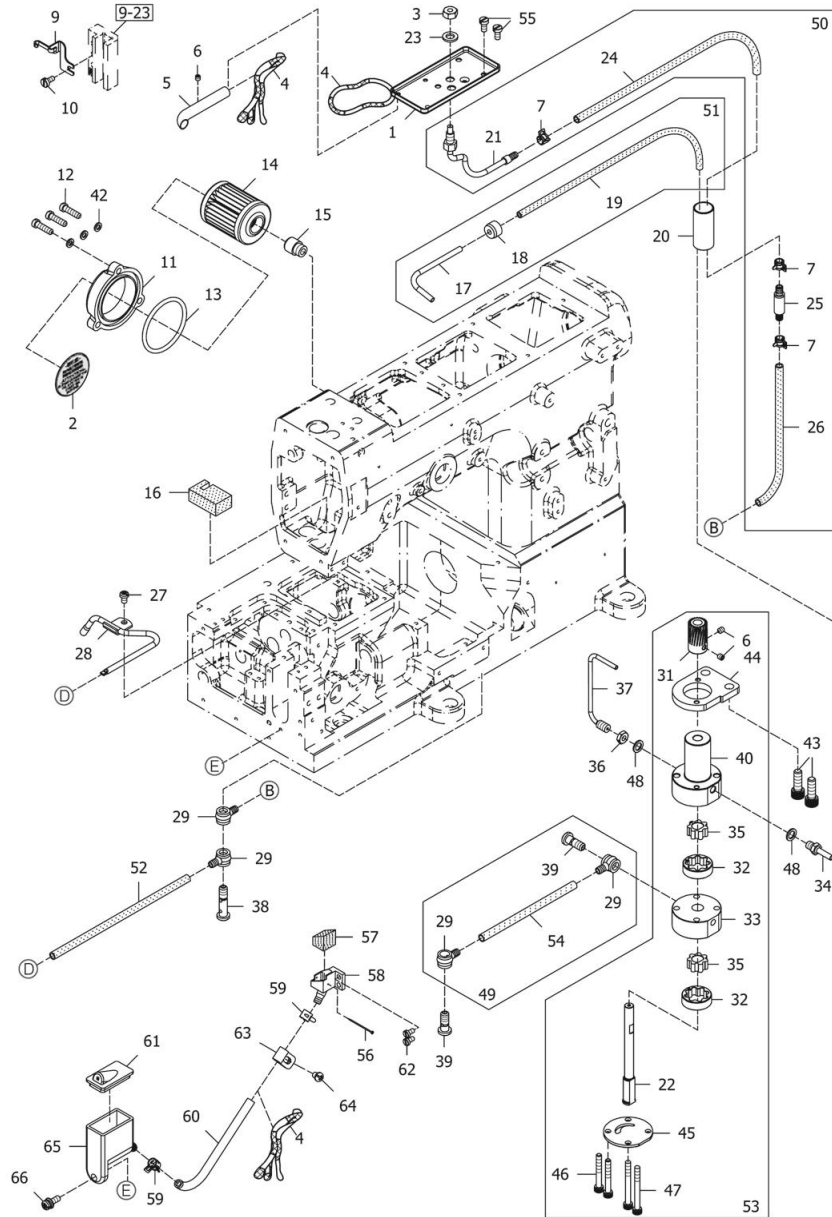


# **ELECTRICAL TYPE DIRECT DRIVING PRESSER FOOT LEFT 电磁式直接驱动抬押脚组 15**

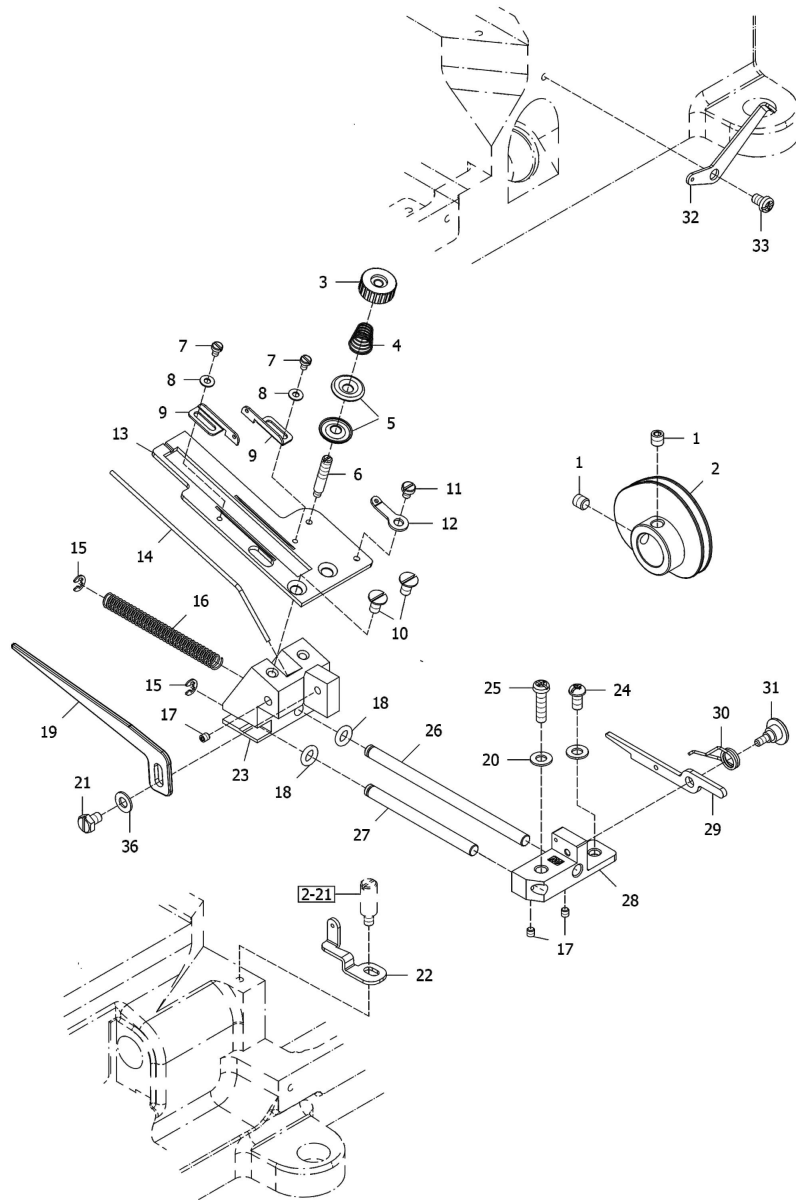
Ref.	Parts		品名		Amt.
<u>No.</u>	<u>No.</u>	<u>Description</u>		<u>Req.</u>	
1	07871901	Presser Foot Lifter Solenoid.....	抬压脚电磁铁(强力型).....	1	
2	07871902	Solenoid Bracket.....	电磁铁吊架.....	1	
3	07871903	Nut.....	螺帽.....	1	
4	07871904	Plastic Pushing Block.....	塑料推块.....	1	
5	07871909	Presser Foot Lifter C. Set.....	电磁直接式抬压脚组(强力型)	1	
6	07870245	Screw (M4-0.7x8).....	螺丝.....	1	
7	07870915	Screw (M6-1.0x16)(白金).....	螺丝.....	2	
8	07870547	Washer(WF06).....	垫片.....	2	
9	07871910	Spring.....	定位缓冲压簧.....	1	
10	07871914	Screw (M5-0.8x12).....	螺丝.....	3	

16

Ref.	Parts		Amt.	
No.	No.	Description	品 名	Req.
1	07871301	Oil Receiver.....	润滑油接收盘.....	1
2	07871357	Warning Sticker.....	贴纸.....	1
3	07871303	Nut.....	螺帽.....	1
4	07871304	Oil Wick.....	油蕊.....	3
5	07871305	Needle Bar Connecting Rod Oil Pip.....	针棒连杆轴承给油管.....	1
6	07870229	Screw (M4-0.7×4).....	螺丝.....	3
7	07871379	Tube Clamp.....	管束.....	3
9	07871309	Oil Wick Holder.....	油蕊固定座.....	1
10	07870702	Screw (9/64-40×7.5).....	螺丝.....	1
11	07871311	Oil Filter Cap.....	滤油器盖.....	1
12	07871312	Screw (11/64-40×16).....	螺丝.....	3
13	07871313	O-ring (P42).....	O环.....	1
14	07871314	Oil Filter .....	滤油器.....	1
15	07871315	Oil Filter Connector (3/8-28×6).....	滤油器连接管.....	1
16	07871316	Felt.....	吸油棉.....	1
17	07871317	Suction Pipe.....	回油管.....	1
18	07871318	Suction Pipe Bushing.....	回油管衬套.....	1
19	07871319	Oil Tube (3×5×440mm).....	油管.....	1
20	07871320	Draining Pipe.....	油路套管.....	1
21	07871321	Oil Sight Top Nozzle.....	外视油量上喷嘴.....	1
22	07601622	Oil Pump Shaft.....	油泵主轴.....	1
23	07870547	Washer(WF06).....	垫片.....	1
24	07871324	Oil Tube (4×6×30mm).....	油管 (4×6×30mm).....	1
25	07871325	Non-Return Valve Unit.....	止回阀.....	1
26	07601626	Oil Tube (4×6×360mm).....	油管 (4×6×360mm).....	1
27	07600222	Screw (M4-0.7×6).....	螺丝.....	1
28	07601628	Oil Sight Top Nozzle.....	喷油管.....	1
29	07871329	Oil Tube Joint, One Way.....	油管接头(单向).....	4
31	07601631	Gear.....	齿轮.....	1
32	07601632	Oil Pump Fame Pinion.....	油泵本体内转子.....	2
33	07601633	Oil Pump Fame(Lower).....	油泵本体(底座).....	1
34	07871344	Pipe Joint.....	油管接头.....	1
35	07601635	Oil Pump Fame Pinion.....	油泵本体内转子.....	2
36	07871345	Nut.....	螺帽.....	1
37	07601637	Vinyl Pipe.....	弯管.....	1
38	07871338	Fitting Stud (Long)(1/4-40×27).....	放油螺丝 (长).....	1
39	07871336	Fitting Stud (Short)(1/4-40×16).....	放油螺丝 (短).....	2
40	07601640	Oil Pump Fame(Middle).....	油泵本体(中座).....	1
42	07871355	Washer (WF02).....	垫片.....	3
43	07870915	Screw (M6-1×16).....	螺丝.....	2

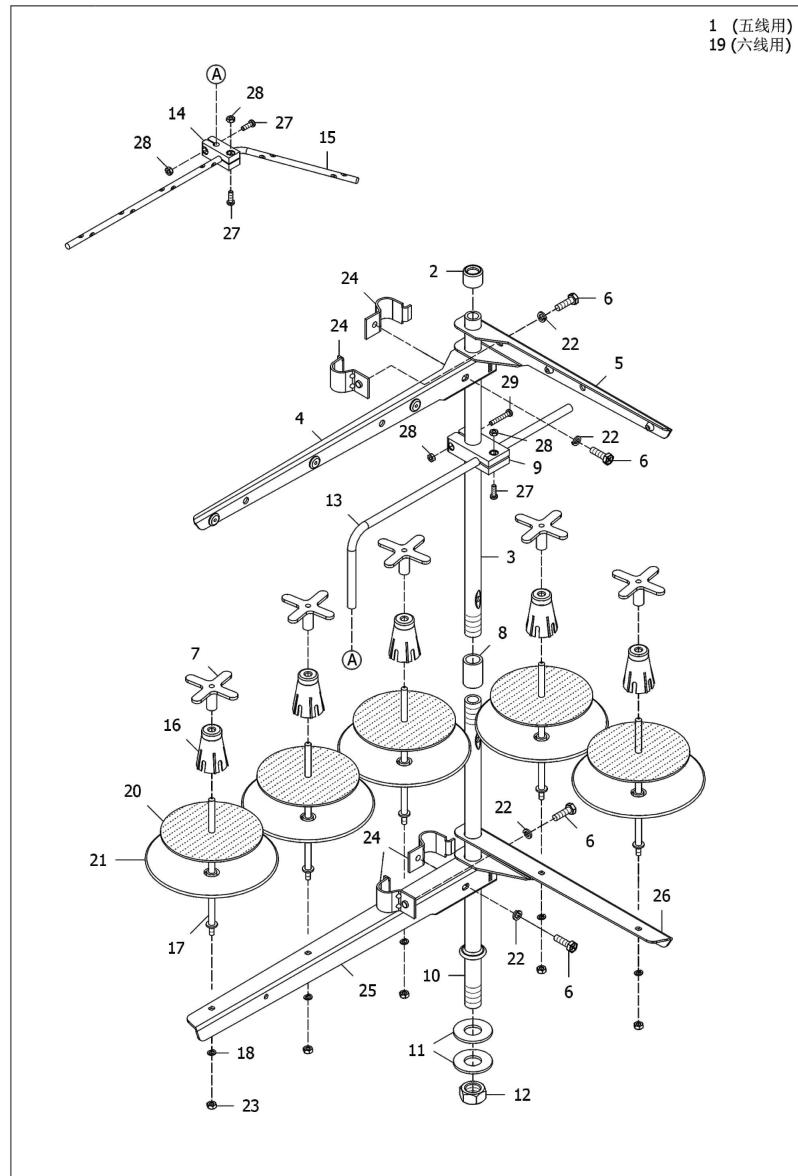
**LUBRICATING MECHANISM****油滑机构**

Ref.	Parts			Amt.
No.	No.	Description	品名	Req.
44	07601644	Oil Pump Fame(Upper).....	油泵本体(上座).....	1
45	07601645	Lower Cover.....	下座盖.....	1
46	07601646	Screw(M4-0.7x30).....	螺丝.....	2
47	07601647	Screw(M4-0.7x39).....	螺丝.....	2
48	07871337	Washer.....	垫片.....	2
49	07601649	Forced Fuel Feeding C.Set.....	强制给油组件.....	1
50	07601650	Oil Sight Top Nozzle C.Set.....	上喷油管组.....	1
51	07871359	Suction Pipe C.Set.....	回油管组.....	1
52	07601652	Oil Tube (4×6×240mm).....	油管 (4×6×240mm).....	1
53	07601653	Oil Pump Body.....	油泵本体组.....	1
54	07601654	Pipe.....	油管.....	1
55	07870125	Screw (M4-0.7×8).....	螺丝.....	2
56	07601656	Pin.....	插销.....	1
57	07601657	Felt.....	羊毛毡.....	1
58	07601658	Needle Cooler .....	针冷却器.....	1
59	07601659	Clamp.....	管束.....	2
60	07601660	Oil Tube (4×6×100mm).....	油管 (4×6×100mm).....	1
61	07601661	Cap.....	下蓄油槽盖.....	1
62	07601662	Screw (M3-0.5×6).....	螺丝.....	2
63	07601663	Bracket.....	油蕊固定座.....	1
64	07600116	Screw (M4-0.7×5).....	螺丝.....	1
65	07601665	Silicone Oil Reservoir (Upper) .....	下蓄油槽.....	1
66	07601666	Screw (M4-0.7×12).....	螺丝.....	1

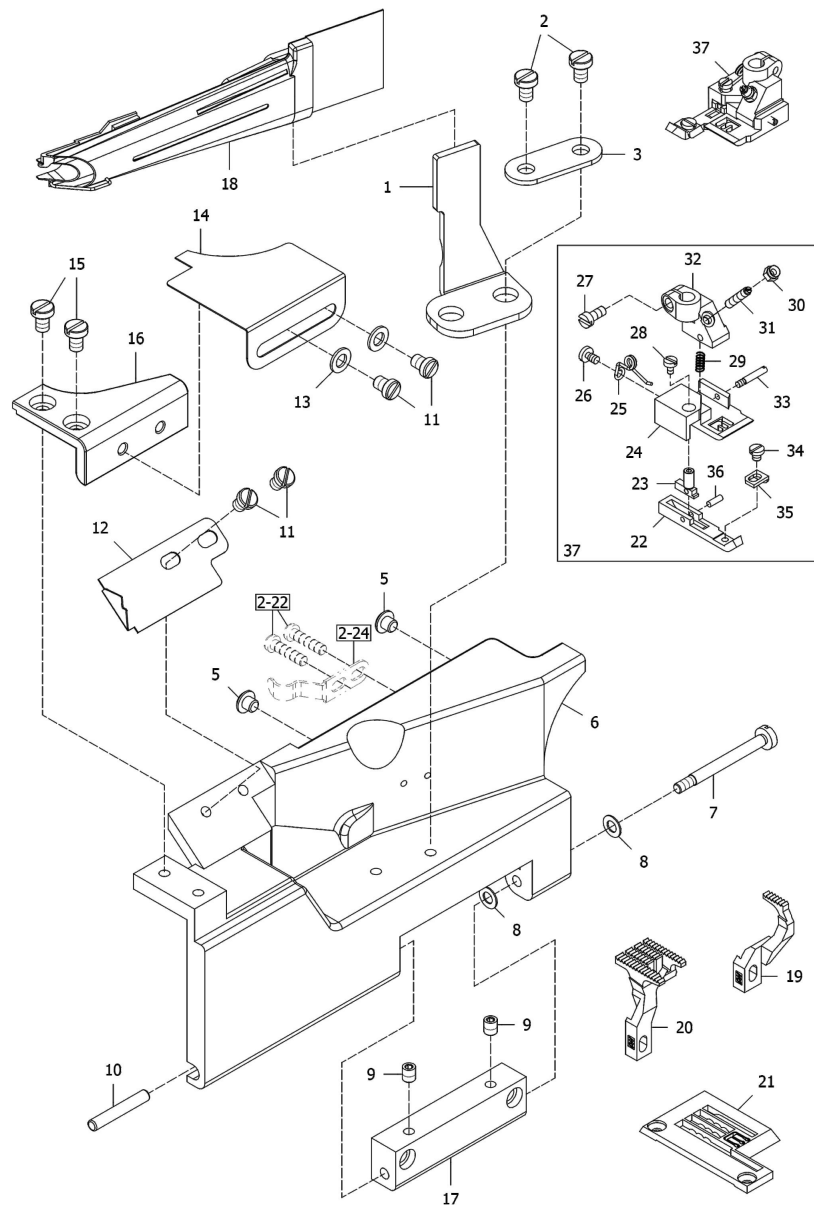
**NEEDLE THREAD TAKE-UP MECHANISM****针线提线诸元**

Ref. No.	Parts No.	Description	品 名	Amt. Req.
1	07870648	Screw (M5-0.8×5).....	螺丝	2
2	07601702	Thread Take-UP.....	收线凸轮	1
3	07601703	Nut.....	螺帽	1
4	07601704	Spring .....	弹簧	1
5	07870350	Thread Retainer.....	夹线片	2
6	07601706	Screw (M4-0.7×15,M3-0.5×3.5).....	螺栓	1
7	07601038	Screw(M2.5-0.45×3.8).....	螺丝	2
8	07601708	Washer.....	垫片	2
9	07601709	Thread Guide.....	导线零件	2
10	07600309	Screw (M4-0.7×8).....	螺丝	2
11	07601711	Screw (M3-0.5×4).....	螺丝	1
12	07601712	Thread Guide.....	导线零件	1
13	07601713	Bracket.....	拨线基板	1
14	07601714	Thread Support.....	隔线棒	1
15	07870838	C-Retaining Ring.....	C型扣环	2
16	07601716	Spring .....	弹簧	1
17	07873038	Screw (M3-0.5×3).....	螺丝	3
18	07601718	O-Ring .....	O型油环	2
19	07601719	Thread Guide.....	拨线片	1
20	07870323	Washer (WF04).....	垫片	2
21	07601721	Screw (M4-0.7×6).....	螺丝	1
22	07601722	Thread Guide.....	导线片	1
23	07601723	Bracket.....	前拨线基座	1
24	07600310	Screw (M4-0.7×8).....	螺丝	1
25	07600223	Screw(M4-0.7×16).....	螺丝	1
26	07601726	Shaft.....	轴	1
27	07601727	Shaft.....	轴	1
28	07601728	Bracket.....	后拨线基座	1
29	07601729	Stopper .....	止位片	1
30	07601730	Spring .....	弹簧	1
31	07601731	Screw .....	段付螺丝	1
32	07601732	Thread Guide.....	导线片	1
33	07600222	Screw (M4-0.7×6).....	螺丝	1
36	07601736	Washer.....	垫片	1



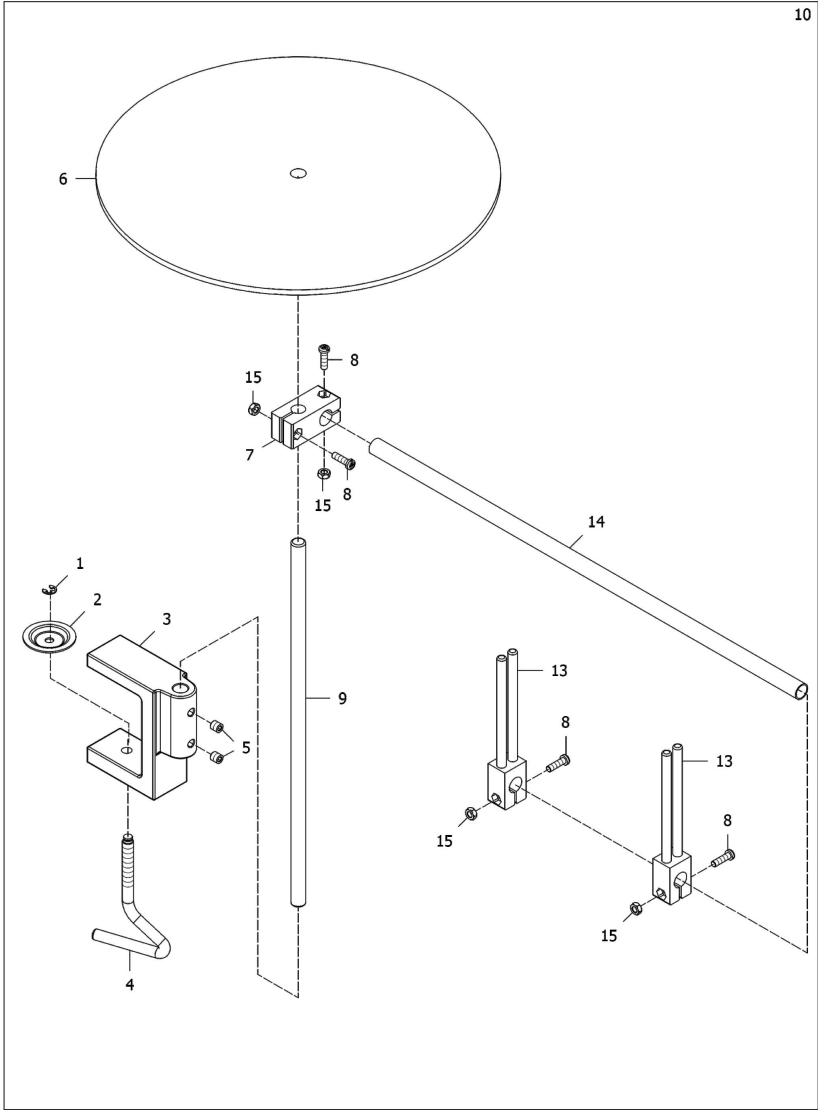
**THREAD STAND****线架组****18**

Ref.	Parts	Description	品 名	Amt.
No.	No.			Req.
1	07873101	Thread Stand (5 Spools Type).....	线架 (五线用).....	1
2	07873102	Column Cap.....	柱头盖.....	1
3	07873103	Column Pipe (Upper).....	上线柱.....	1
4	07873104	Thread Hanger (3 Spools Type).....	3 孔过线吊臂.....	1
5	07873105	Thread Hanger (2 Spools Type).....	2 孔过线吊臂.....	1
6	07873106	Screw (M6-1×20).....	螺丝 (不单卖).....	4
7	07873107	Rubber Spool Cushion.....	橡胶线轴避震垫.....	5
8	07873108	Column Pipe Connector.....	线柱接头.....	1
9	07873143	Thread Guide Holder (Large).....	大过线杆固定座.....	1
10	07873110	Column Pipe (Lower).....	下线柱.....	1
11	07873111	Washer.....	垫片.....	2
12	07873112	Nut.....	螺帽.....	1
13	07873113	Thread Guide Arm.....	过线杆连接臂.....	1
14	07873145	Thread Guide Holder (Small).....	小过线杆固定座.....	1
15	07873115	Thread Guide (6 Spools Type).....	6 孔过线杆.....	1
16	07873116	Spool Cushion.....	线轴避震座.....	5
17	07873117	Spool Pin.....	线轴柱.....	5
18	07873118	Spring Washer.....	弹簧垫片.....	5
19	07873119	Thread Stand (6 Spools Type).....	线架(六线用).....	1
20	07873120	Spool Mat.....	线轴垫.....	5
21	07873121	Spool Seat Disc.....	线轴底盘.....	5
22	07873122	Spring Washer.....	弹簧垫片.....	1
23	07873123	Nut.....	螺帽.....	1
24	07873124	Column Pipe Connector.....	线柱接头.....	1
25	07873125	Spool Stand (3 Spools Type).....	3 孔线轴架.....	1
26	07873126	Spool Stand (2 Spool Type).....	2 孔线轴架.....	1
27	07873141	Screw (M4-0.7×12).....	螺丝 (不单卖).....	3
28	07873142	Nut.....	螺帽.....	4
29	07873144	Screw (M4-0.7×25).....	螺丝 (不单卖).....	1

**"Q" DEVICE (1)**

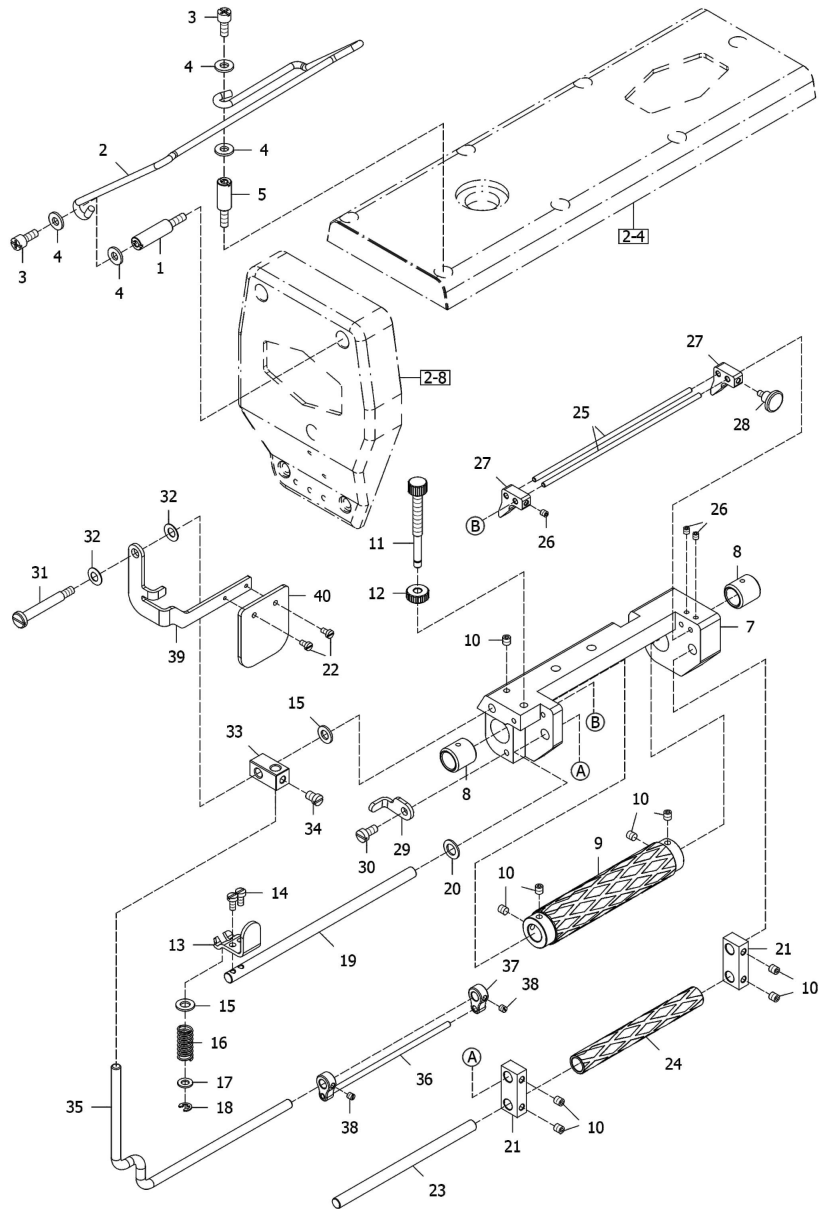
Ref. No.	Parts No.	Description	品 名	Amt. Req.
1	07601901	Bracket.....	喇叭架.....	1
2	07601902	Screw (M5-0.8×10).....	螺丝.....	2
3	07601903	Washer.....	垫片.....	1
5	07600245	Cushion.....	避震垫.....	2
6	07601906	Front Cover.....	前盖.....	1
7	07600228	Screw(M4-0.7x8.5).....	螺丝.....	1
8	07870226	Conical Spring Washer.....	锥形弹簧垫片.....	2
9	07600231	Screw(M5-0.8x6).....	螺丝.....	2
10	07600229	Pin.....	插销.....	1
11	07601911	Screw (M5-0.8×6).....	螺丝.....	4
12	07601912	Fabric Guard.....	衣布案内片.....	1
13	07871148	Washer.....	垫片.....	2
14	07601914	Auxiliary Plate/Front Cover.....	前盖补助板.....	1
15	07601915	Screw (M5-0.8×7.5).....	螺丝.....	2
16	07601916	Front Cover (Small).....	小前盖.....	1
17	07600243	Front Cover Hinge.....	前盖铰链.....	1
18	07872602	Binder.....	喇叭包边器(同一般平台式支针出喇叭).....	1
19	07601919	Differential Feed Dog.....	插动送布齿.....	1
20	07601920	Main Feed Dog.....	主送布齿.....	1
21	07601921	Needle Plate.....	针板.....	1
22	07601922	Fixed Axle.....	固定轴.....	1
23	07601923	Spring Base.....	弹簧座.....	1
24	07601924	Plate.....	本体压板.....	1
25	07601925	Presser Foot Spring.....	压脚弹簧.....	1
26	07601926	Screw.....	螺丝.....	1
27	07601927	Screw.....	螺丝.....	1
28	07601928	Screw.....	螺丝.....	1
29	07601929	Spring.....	弹簧.....	1
30	07601930	Hexagon Nut.....	六角螺帽.....	1
31	07601931	Screw.....	螺丝.....	1
32	07601932	Presser Head.....	押脚头.....	1
33	07601933	Screw.....	螺丝.....	1
34	07601934	Screw.....	螺丝.....	1
35	07601935	Fender Plate.....	挡片.....	1
36	07601936	Pin.....	插销.....	1
37	07601937	Presser Foot C.Set.....	押脚组.....	1

**"Q"标准喇叭包边装置 (1)**

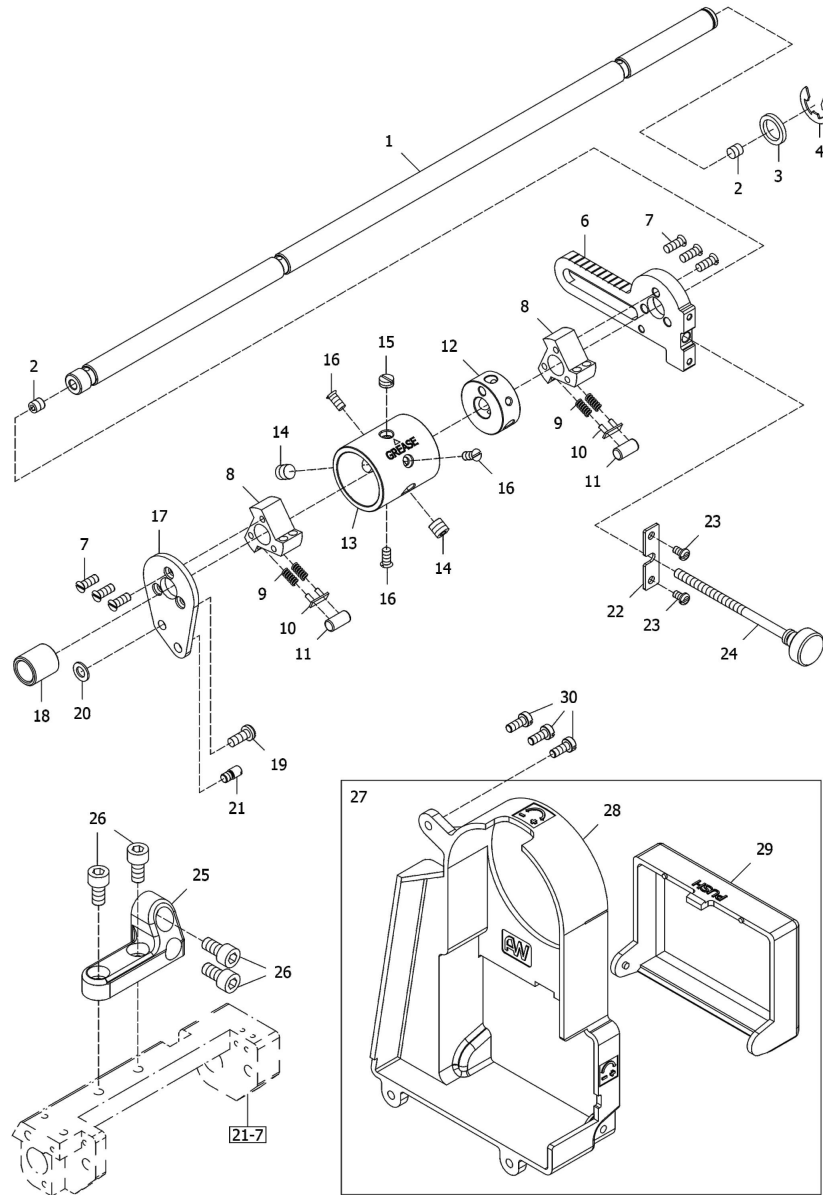


**"Q" DEVICE (2)**

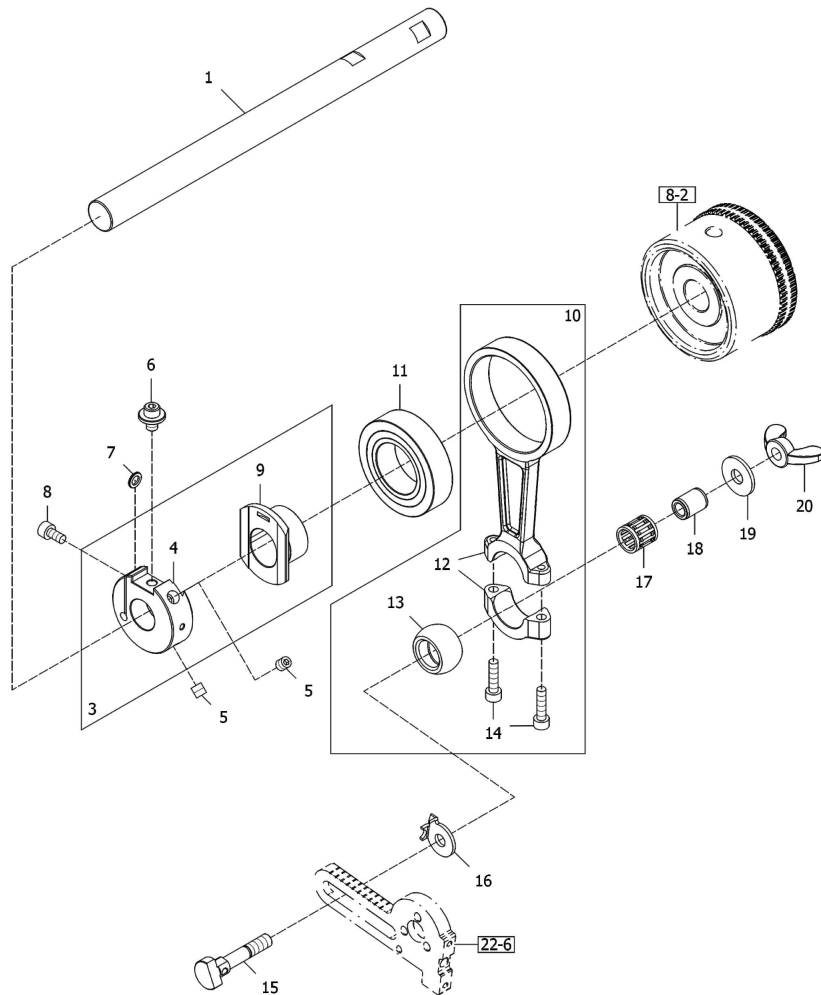
Ref.	Parts			Amt.
No.	No.	Description	品 名	Req.
1	07872701A	Ring.....	扣环.....	1
2	07872702A	Fixed Disc.....	固定圆盘.....	1
3	07872703A	Fixture.....	固定夹架.....	1
4	07872704A	Fixing Lever.....	固定螺杆.....	1
5	07872705A	Screw(M6-1x6).....	螺丝.....	2
6	07872706A	Tope Disc.....	布条盘.....	1
7	07872707A	Collar .....	轴环.....	1
8	07872708A	Sewer (M4-0.7×13.8).....	螺丝.....	4
9	07872709A	Tape Disc Post.....	布条盘轴.....	1
10	07872710A	Tape Disc C.Set.....	布条盘组.....	1
13	07872713	Binding Cloth Guider.....	滚条布导架.....	2
14	07872714	Tape Dise Post.....	布条盘轴.....	1
15	07872715	Nut.....	螺帽.....	4

**PULLER MECHANISM EXCLUSIVE PARTS FOR TAPE (1)****织带专用拖轮机构(1)**

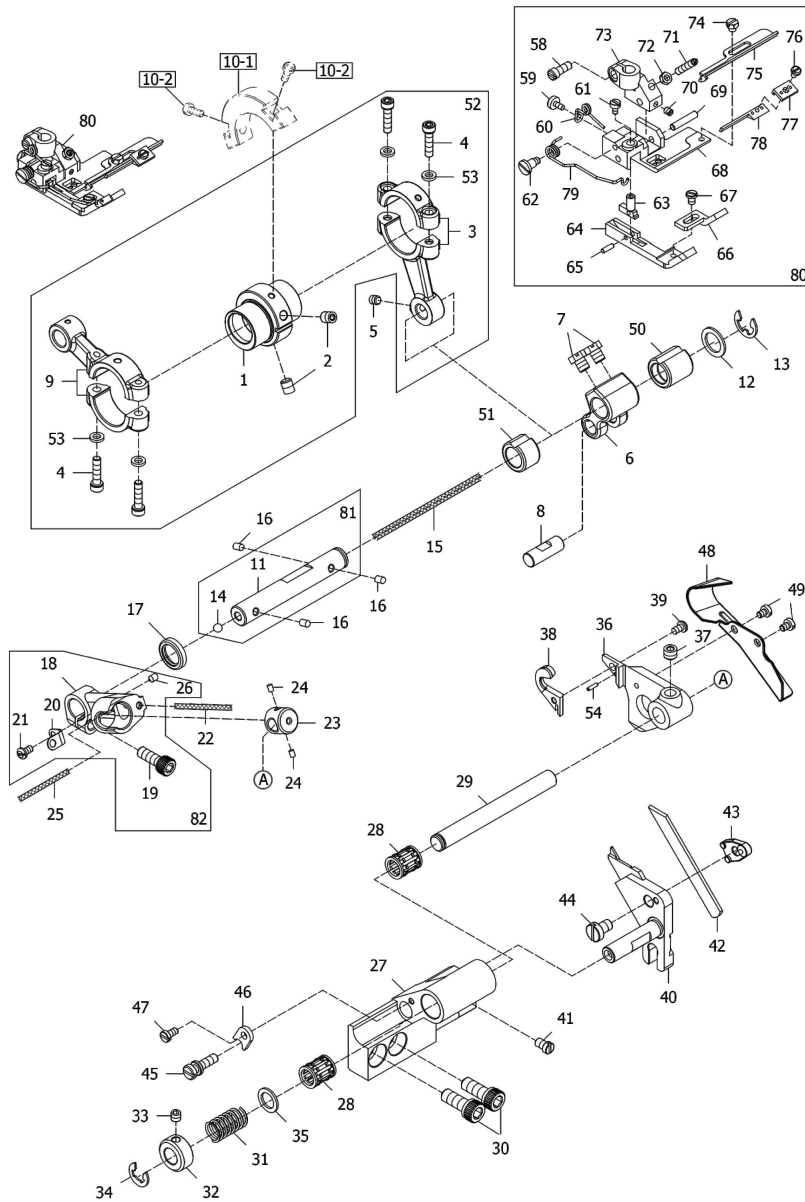
Ref. No.	Parts No.	Description	品 名	Amt. Req.
1	07602101	Screw (M4-0.7×12).....	螺丝	1
2	07602102	Tape Holder.....	布导架	1
3	07600233	Screw (M4-0.7×10).....	螺丝	2
4	07872903	Washer(WF03).....	垫片	4
5	07602105	Screw (M4-0.7×12).....	螺丝	1
7	07602107	Tension Roller Holder.....	张力辊固定座	1
8	07602108	Roller Shaft Bushing.....	辊轴衬套	2
9	07602109	Tension Roller (Large).....	张力辊轴(大)	1
10	07870229	Screw (M4-0.7×4).....	螺丝	9
11	07602111	Adjusting Screw (M5-0.8×28).....	调节螺丝	1
12	07602112	Lock Nut.....	调节螺帽	1
13	07602113	Roller Lever.....	杠杆滚轮	1
14	07602114	Screw (M3-0.5×6.5).....	螺丝	2
15	07871148	Washer.....	垫片	2
16	07602116	Tension Sping.....	弹簧	1
17	07602117	Washer.....	垫片	1
18	07870838	Retaining Ring.....	扣环	1
19	07602119	Tension Link Shaft.....	拉杆轴	1
20	07602120	Washer.....	垫片	1
21	07602121	Tension Link.....	张力调节器	2
22	07602122	Screw (M2.5-0.45×5).....	螺丝	2
23	07602123	Roller Shaft(Small).....	滚轮轴(小)	1
24	07602124	Tension Roller (Small).....	张力辊轴(小)	1
25	07602125	Tape Guide Wire.....	布导器杆	2
26	07873038	Screw (M3-0.5×3).....	螺丝	3
27	07602127	Tape Guide.....	布导器	2
28	07602128	Knob Screw (M3-0.5×5).....	螺丝	1
29	07602129	Tape Guide Stop.....	布导器挡片	1
30	07870125	Screw (M4-0.7×8).....	螺丝	1
31	07870225	Screw (M4-0.7×8).....	螺丝	1
32	07870226	Conical Spring Washer.....	锥形弹簧垫片	2
33	07602133	Tape Guide Bar Holder.....	布导器杆固定座	1
34	07602134	Screw (11/64-40x5.5).....	螺丝	1
35	07602135	Tape Guide Bar (Long).....	布导器杆(长)	1
36	07602136	Tape Guide.....	布导器杆	1
37	07602137	Tape Guide.....	布导器	1
38	07870319	Screw (1/8-44x2.6).....	螺丝	2
39	07602139	Eye Guard Support.....	护目镜固定座	1
40	07870425	Safety Plate.....	护目镜片	1

**PULLER MECHANISM EXCLUSIVE PARTS FOR TAPE (2)****织带专用拖轮机构(2)**

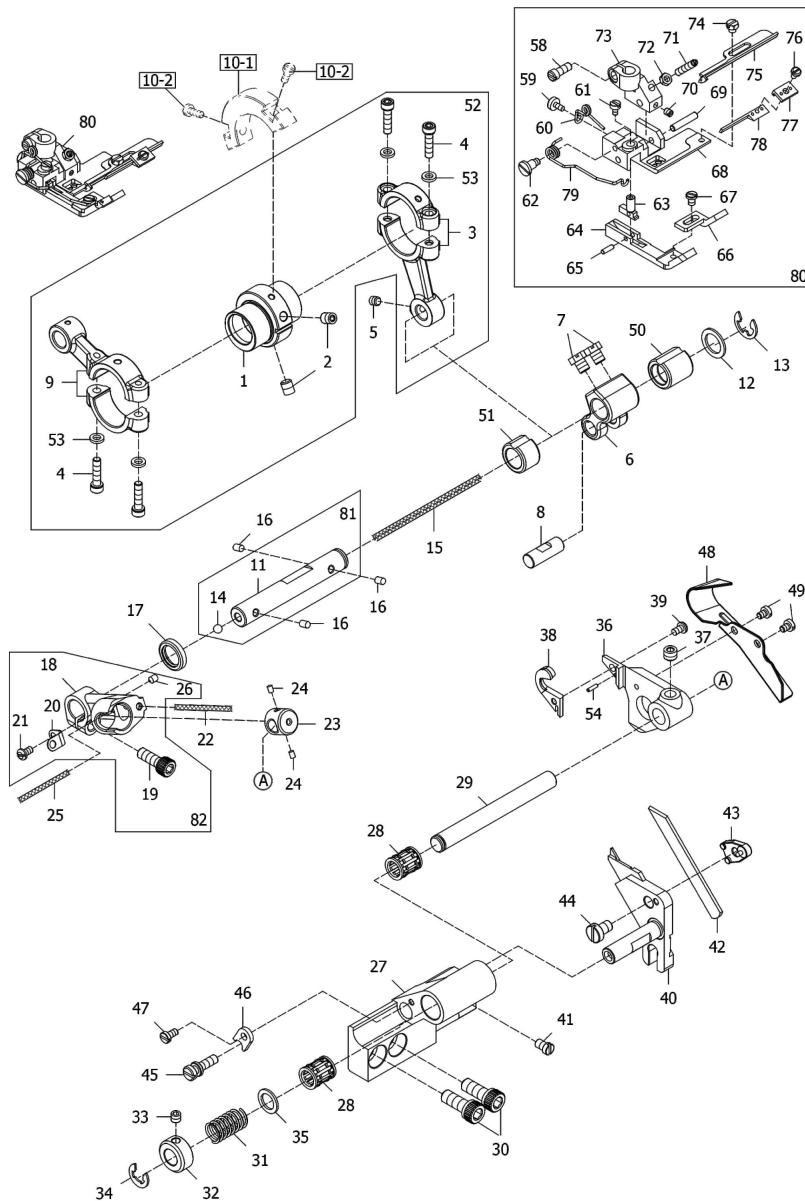
Ref. No.	Parts No.	Description	品 名	Amt. Req.
1	07602201	Roller Shaft.....	滚轮轴.....	1
2	07870648	Screw (M5-0.8x5).....	螺丝.....	2
3	07602203	Thrust Ring.....	止推环.....	1
4	07602204	Retaining Ring.....	扣环.....	1
6	07602206	Clutch Lever.....	离合器杆.....	1
7	07602207	Screw (9/64-40x9.5).....	螺丝.....	6
8	07873020	Clutch.....	驱动离合器.....	2
9	07602209	Clutch Spring.....	离合器弹簧.....	12
10	07873021	Clutch Spring Seat.....	离合器弹簧座.....	6
11	07873027	Clutch Roller.....	离合器轴心.....	6
12	07602212	Clutch Sleeve Coller.....	离合器套管螺栓.....	1
13	07602213	Clutch Sleeve.....	离合器衬套.....	1
14	07602214	Screw (1/4-40x6).....	螺丝.....	2
15	07602215	Screw (1/4-40x3).....	螺丝.....	1
16	07602216	Screw (9/64-40x7.5).....	螺丝.....	3
17	07602217	Clutch Plate.....	离合器挡板.....	1
18	07602218	Roller Shaft Bushing.....	辊轴衬套.....	1
19	07870706	Screw (M4-0.7x10).....	螺丝.....	1
20	07602220	Washer.....	垫片.....	1
21	07602221	Screw (M4-0.7x4.5).....	螺丝.....	1
22	07602222	Clutch Lever Pin Adjusting Plate.....	离合器杠杆调节板.....	1
23	07602223	Screw (M3-0.5x5).....	螺丝.....	2
24	07602224	Adjusting Screw (M4-0.7x69).....	调节螺丝.....	1
25	07602225	Tension Roller Holder Bracket.....	张力辊架支架.....	1
26	07873007	Screw (M6-1x12).....	螺丝.....	4
27	07602227	Clutch Rod Cover C. Set.....	离合器盖组.....	1
28	07602228	Clutch Rod Cover.....	离合器盖.....	1
29	07602229	Clutch Rod Cover (Right).....	离合器盖(右).....	1
30	07870202	Screw (M4-0.7x10).....	螺丝.....	3

**PULLER MECHANISM EXCLUSIVE PARTS FOR TAPE (3)****织带专用拖轮机构(3)****23**

Ref.	Parts			Amt.
No.	No.	Description	品 名	Req.
1	07602301	Upper Shaft (Right).....	上主动轴(右).....	1
3	07602303	Clutch Eccentric C.Set .....	离合器偏心轮组.....	1
4	07602304	Clutch Regulator .....	离合器调节器.....	1
5	07870648	Screw (M5-0.8x5).....	螺丝.....	2
6	07872833	Adjusting Screw (M5-0.8x6.2).....	调节螺丝.....	1
7	07602307	Spacer .....	垫圈.....	1
8	07870256	Screw (M4-0.7x8).....	螺丝.....	1
9	07602309	Clutch Eccentric.....	离合器偏心轮.....	1
10	07602310	Clutch Driving Rod C.Set .....	离合器传动杆组.....	1
11	07602311	Ball Bearing .....	滚珠轴承.....	1
12	07602312	Clutch Driving Rod.....	离合器传动杆.....	1
13	07602313	Ball .....	球.....	1
14	07602314	Screw (M4-0.7x16).....	螺丝.....	2
15	07602315	Clutch Lever Pin .....	离合器杆销.....	1
16	07602316	Pointer.....	指针.....	1
17	07602317	Roller Bearing.....	滚珠轴承.....	1
18	07602318	Bushing.....	套管.....	1
19	07602319	Washer.....	垫片.....	1
20	07602320	Wing Nut.....	蝶型螺母.....	1

**KNIFE DRIVING MECHANISM (1)****右修刀驱动机构(1)****24**

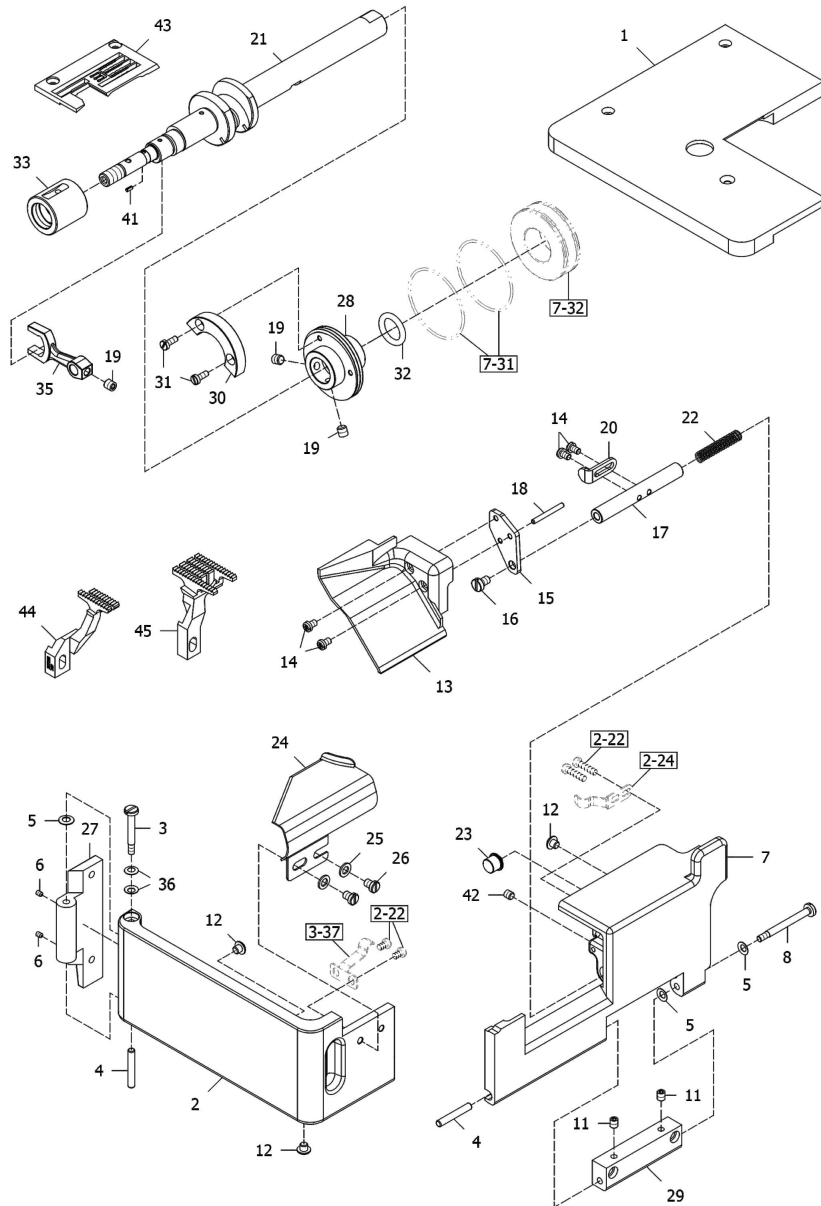
Ref. No.	Parts No.	Description	品 名	Amt. Req.
1	07602401	Eccentric.....	偏心轮.....	1
2	07600231	Screw(M5-0.8×6).....	螺丝.....	2
3	07602403	Connection.....	连接杆.....	1
4	07600704	Screw (M3.5-0.6×14).....	螺丝.....	4
5	07870229	Scwer (M4-0.7×4).....	螺丝.....	1
6	07602406	Crank.....	曲柄.....	1
7	07602407	Screw(11/64-40x5.5).....	螺丝.....	2
8	07602408	Pin.....	插销.....	1
9	07602409	Connection.....	连接杆.....	1
11	07602411	Shaft.....	轴.....	1
12	07601003	Washer.....	垫片.....	1
13	07601004	C-Retaining Ring.....	C型扣环.....	1
14	07602414	Ball.....	球.....	1
15	07602415	Oil Wick.....	油芯.....	1
16	07871259	Felt.....	毛毡.....	3
17	07602417	Oil Seal.....	油封.....	1
18	07602418	Lever.....	摇杆.....	1
19	07870634	Screw(M5-0.8x14).....	螺丝.....	1
20	07602420	Latch.....	弹簧锁.....	1
21	07602223	Screw (M3-0.5×5).....	螺丝.....	1
22	07602422	Oil Wick.....	油芯.....	1
23	07602423	Block.....	阻塞.....	1
24	07602424	Felt.....	毛毡.....	2
25	07602425	Oil Wick.....	油芯.....	1
26	07600707	Screw(M3-0.5×4).....	螺丝(尖底).....	1
27	07602427	Bracket.....	支架.....	1
28	07602428	Needle Bearing.....	滚针轴承.....	2
29	07602429	Shaft.....	轴.....	1
30	07602430	Screw (M6-1.0×14).....	螺丝.....	2
31	07602431	Spring.....	弹簧.....	1
32	07602432	Collar.....	轴环.....	1
33	07602433	Screw(M4.5-0.75x4).....	螺丝.....	1
34	07602434	Ring.....	扣环.....	1
35	07602435	Washer.....	垫片.....	1
36	07602436	Upper Knife Lever.....	上切刀杆.....	1
37	07600718	Screw (M6-0.75×5).....	螺丝.....	1
38	07602438	Upper Knife.....	上切刀.....	1
39	07602439	Screw(1/8-44x5.5).....	螺丝.....	1
40	07602440	Lower Knife Holder.....	下切刀座.....	1
41	07601307	Screw (M4-0.7×6).....	螺丝.....	1

**KNIFE DRIVING MECHANISM (1)****右修刀驱动机构(1)****24**

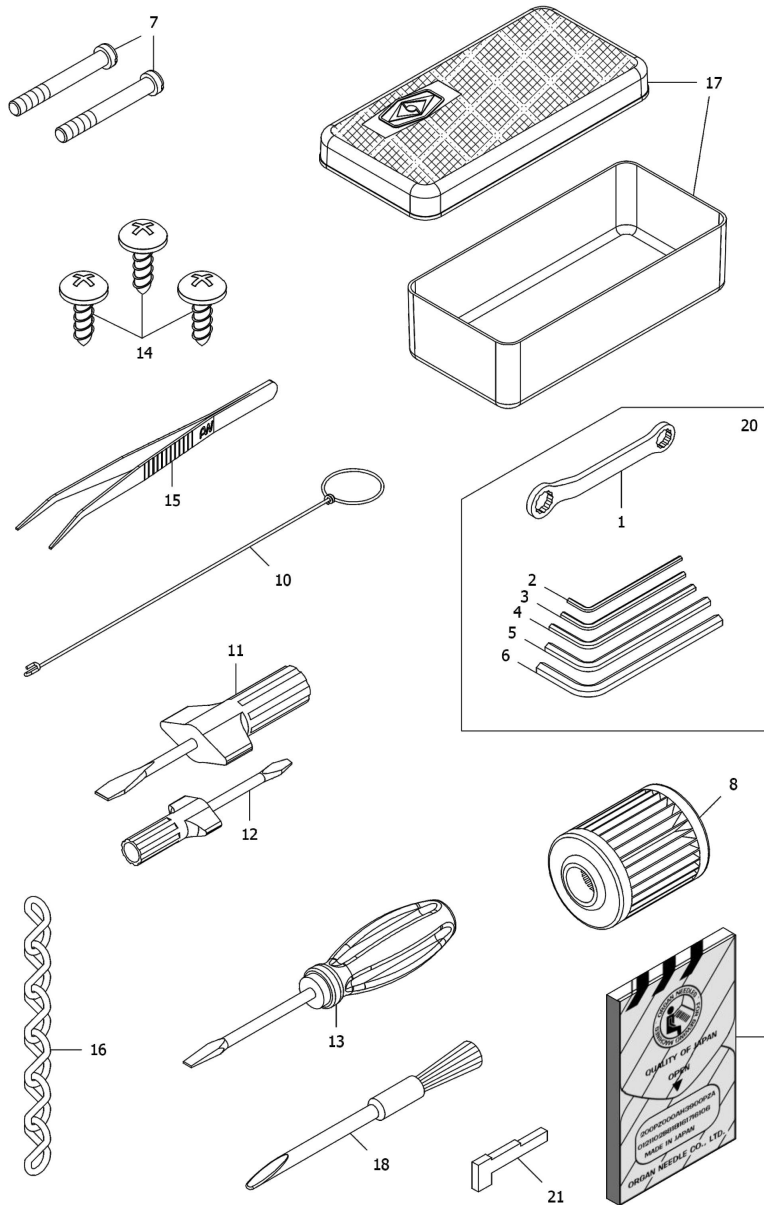
Ref.	Parts	Description	品 名	Amt.
No.	No.			Req.
42	07602442	Lower Knife .....	下切刀 .....	1
43	07602443	Lower Knife Clamp .....	下切刀夹 .....	1
44	07601902	Screw (M5-0.8×10) .....	螺丝 .....	1
45	07602445	Screw .....	段付螺丝 .....	1
46	07602446	Guide .....	导片 .....	1
47	07601662	Screw (M3-0.5×6) .....	螺丝 .....	1
48	07602448	Chip Guard .....	切屑防护器 .....	1
49	07601711	Screw (M3-0.5×4) .....	螺丝 .....	2
50	07602450	Bronze Under Cover .....	下座铜套 .....	1
51	07602451	Bronze Under Cover .....	下座铜套 .....	1
52	07602452	Connection C . Set .....	连接杆组 .....	1
53	07602453	Washer .....	垫片 .....	4
54	07602454	Pin .....	插销 .....	1
58	07602458	Screw .....	螺丝 .....	1
59	07602459	Screw .....	螺丝 .....	1
60	07602460	Presser Foot Spring .....	压脚弹簧 .....	1
61	07602461	Screw .....	螺丝 .....	1
62	07602462	Screw .....	螺丝 .....	1
63	07602463	Spring Base .....	弹簧座 .....	1
64	07602464	Sideways Presser Plate .....	侧边压板 .....	1
65	07602465	Fixed Axle .....	固定轴 .....	1
66	07602466	Fender Plate .....	挡片 .....	1
67	07602467	Screw .....	螺丝 .....	1
68	07602468	Plate .....	本体压板 .....	1
69	07602469	Pin .....	插销 .....	1
70	07602470	Screw .....	螺丝 .....	1
71	07602471	Screw .....	螺丝 .....	1
72	07602472	Hexagon Nut .....	六角螺帽 .....	1
73	07602473	Presser Head .....	押脚头 .....	1
74	07602474	Screw .....	螺丝 .....	1
75	07602475	Lap Former Guide .....	导布器 .....	1
76	07602476	Screw .....	螺丝 .....	1
77	07602477	Spring Plate Holder .....	弹簧片固定座 .....	1
78	07602478	Lap Former Guide .....	导布器 .....	1
79	07602479	Presser Foot Spring .....	压脚弹簧 .....	1
80	07602480	Presser Foot C.Set .....	押脚组 .....	1
81	07602481	Crank Connection C.Set .....	曲柄连接杆组 .....	1
82	07602482	Lever C.Set .....	摇杆组 .....	1



25

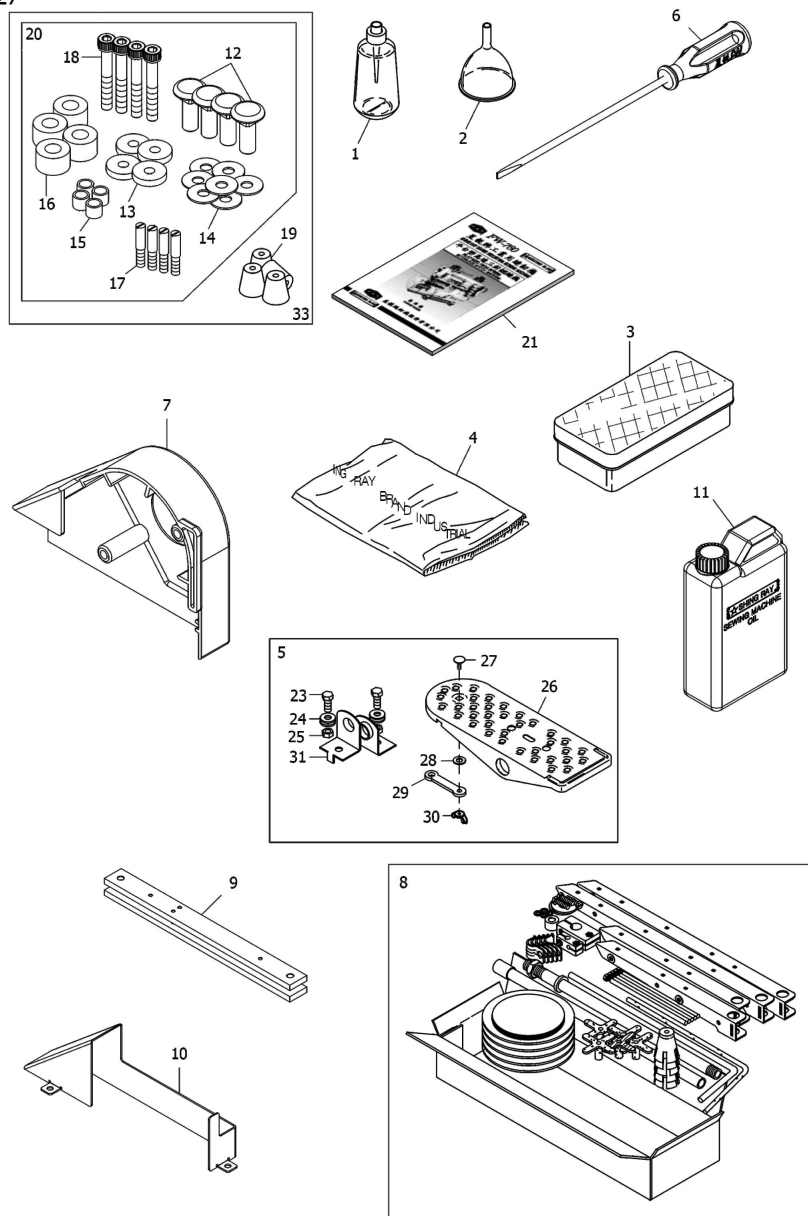
**KNIFE DRIVING MECHANISM (2)****右修刀驱动机构(2)**

Ref. No.	Parts No.	Description	品 名	Amt. Req.
1	07602501	BED Cover (Left).....	BED左上盖.....	1
2	07602502	Side Cover .....	左侧盖.....	1
3	07600327	Screw (M4-0.7×8).....	螺丝.....	1
4	07600229	Pin.....	插销.....	2
5	07870226	Conical Spring Washer.....	锥形弹簧垫圈.....	3
6	07600330	Screw (M3-0.5×4).....	螺丝.....	2
7	07602507	Front Cover (Lower).....	前盖底座.....	1
8	07600228	Screw(M4-0.7×8.5).....	螺丝.....	1
11	07600231	Screw(M5-0.8×6).....	螺丝.....	2
12	07600245	Cushion.....	避震垫.....	3
13	07602513	Front Cover (Small).....	前盖(小).....	1
14	07600222	Screw (M4-0.7×6).....	螺丝.....	4
15	07602515	Bracket.....	托架.....	1
16	07601902	Screw (M5-0.8×10).....	螺丝.....	1
17	07602517	Shaft.....	轴.....	1
18	07602518	Pin.....	插销.....	1
19	07870648	Screw (M5-0.8×5).....	螺丝.....	3
20	07602520	Stopper.....	阻塞.....	1
21	07602521	Crank Shaft .....	曲柄轴.....	1
22	07602522	Spring.....	弹簧.....	1
23	07602523	Plug.....	栓.....	1
24	07602524	Fabric Guide.....	档边.....	1
25	07871148	Washer.....	垫片.....	2
26	07601911	Screw (M5-0.8×6).....	螺丝.....	2
27	07600333	Side Cover Hinge.....	侧翻盖后扣.....	1
28	07602528	Bushing.....	套管.....	1
29	07600243	Front Cover Hinge.....	前盖铰链.....	1
30	07602530	Balance Weight.....	平衡锤.....	1
31	07601002	Screw(M3-0.5×7.8).....	螺丝.....	2
32	07600720	O-Ring.....	O型油环.....	1
33	07602533	Copper Sleeve.....	铜套.....	1
35	07602535	Lever.....	杠杆.....	1
36	07600328	Conical Spring Washer.....	锥形弹簧垫圈.....	2
41	07600703	Roll Pin.....	辊子销.....	1
42	07870261	Screw(M4-0.7×6).....	螺丝.....	1
43	07602543	Needle Plate.....	针板.....	1
44	07602544	Differential Feed Dog.....	插动送布齿.....	1
45	07602545	Main Feed Dog.....	主送布齿.....	1

**ATTACHMENT BOX****附件盒**

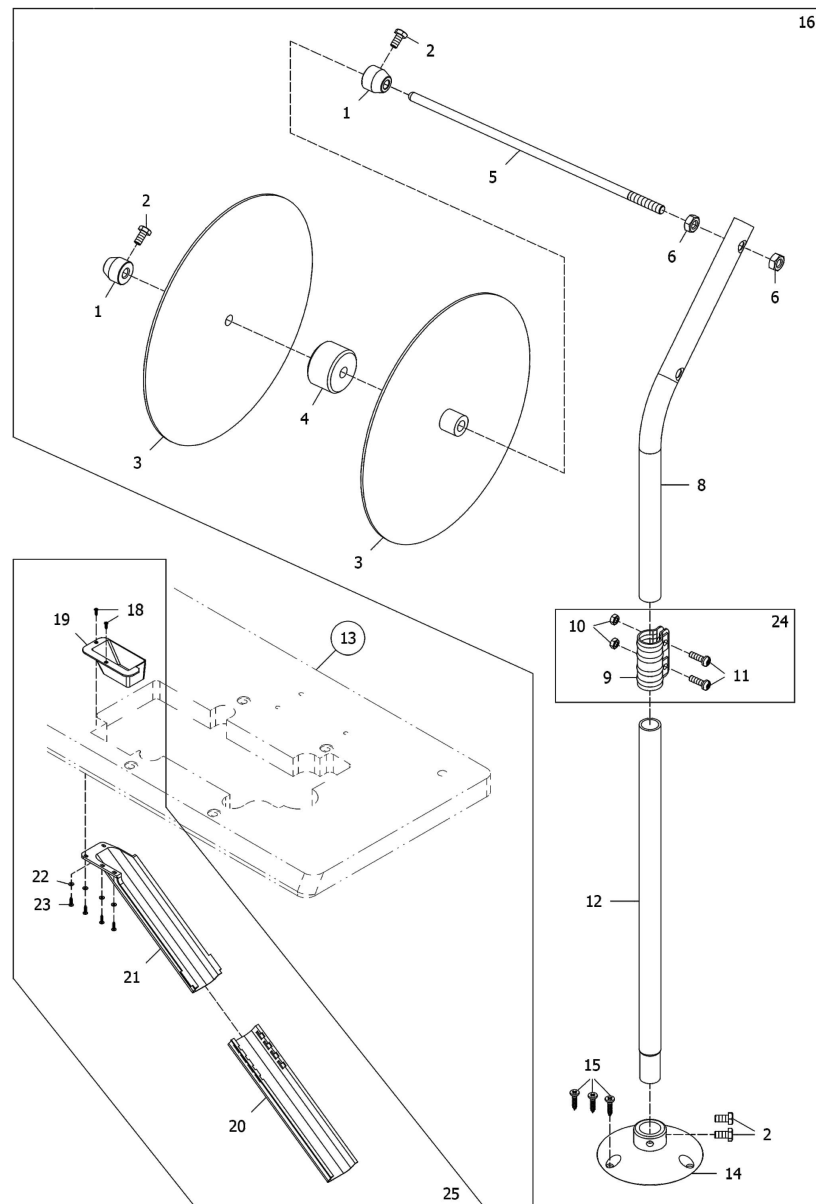
Ref.	Parts	Description	品 名	Amt.
No.	No.			Req.
1	07873201	Ring Spanner.....	梅花扳手.....	1
2	07873202	Hexagonal Wrench (2.0mm).....	内六角扳手.....	1
3	07873203	Hexagonal Wrench (2.5mm).....	内六角扳手.....	1
4	07873204	Hexagonal Wrench (3.0mm).....	内六角扳手.....	1
5	07873205	Hexagonal Wrench (4.0mm).....	内六角扳手.....	1
6	07873206	Hexagonal Wrench (5.0mm).....	内六角扳手.....	1
7	07873208	Screw (M6-1×46).....	螺丝(普通机型配备).....	2
8	07871314	Oil Filter.....	滤油器.....	1
9	07873214	Needle ( System : UYX128GAS ).....	机针组.....	1
10	07873215	Threading Wire.....	穿线铁丝.....	1
11	07873216	Screwdriver.....	螺丝起子.....	1
12	07873217	Screwdriver.....	螺丝起子.....	1
13	07873218	Screwdriver.....	螺丝起子.....	1
14	07873219	Screw .....	螺丝(普通机型配备).....	3
15	07873220	Thread Tweezers.....	穿线夹.....	1
16	07873221	Chain (Attach With Basic Model Only).....	链条 (普通机型配备).....	1
17	07873222	Attachment Box.....	附件盒.....	1
18	07873226	Hairbrush.....	毛刷.....	1
20	07602620	Hexagonal Wrench C.Set.....	内六角扳手组.....	1
21	07602621	Gage,Sheet.....	定规.....	1

27



## ACCESSORIES

Ref. No.	Parts No.	Description	品 名	27 Req.
1	07873301	Oiler.....	油 壶	1
2	07873302	Funnel.....	漏 斗	1
3	07873306	Attachment Box.....	附件盒	1
4	07873307	Machine Cover.....	防尘罩	1
5	07873308	Pedal C. Set.....	脚踏板组(普通车专用).....	1
6	07873310	Screwdriver.....	螺丝起子	1
7	07873311	Belt Cover (Comon).....	皮带盖(上)(普通车专用).....	1
8	07873312	Thread Stand C. Set.....	线架 组	1
9	07602709	Support.....	支撑架	2
10	07873314	Belt Cover (Bottom).....	皮带盖(下)(普通车专用).....	1
11	07873320	Oil.....	润滑油	1
12	07602712	Nut.....	螺 帽	4
13	07602713	Washer.....	辅助垫片	4
14	07602714	Washer.....	垫片	12
15	07602715	Connecting Tube.....	连接管	4
16	07602716	Cushion.....	避震垫	4
17	07602717	Studs.....	螺 栓	4
18	07602718	Screw (M8-1.25x31) .....	螺 丝	4
19	07602719	Machine Cover.....	防尘罩	4
20	07602720	Oil Reservoir Rubber Cushion C.Set.....	底座避震胶垫螺丝组.....	1
21	07602721	Spare Parts Book.....	零件本	1
23	07602723	Screw.....	螺 丝	2
24	07602724	Washer.....	垫片	4
25	07602725	Nut.....	螺 帽	2
26	07602726	Pedal .....	踏 板	1
27	07602727	Screw (M6-1.x14) .....	螺 丝	1
28	07602728	Washer.....	垫片	1
29	07602729	Connecting Rod.....	连接杆	1
30	07602730	Wing Nut.....	翼形螺帽	1
31	07602731	Spool Pin.....	支架	2
33	07602733	Oil Reservoir Rubber Cushion C.Set.....	底座避震胶垫螺丝组.....	1

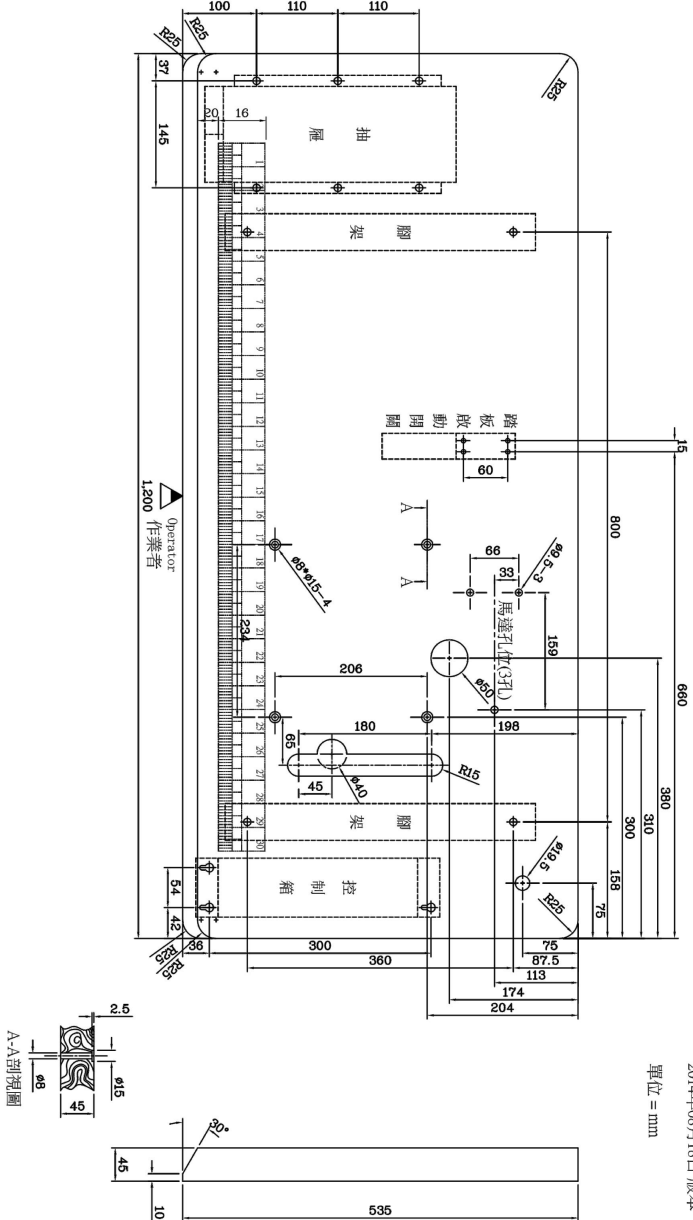
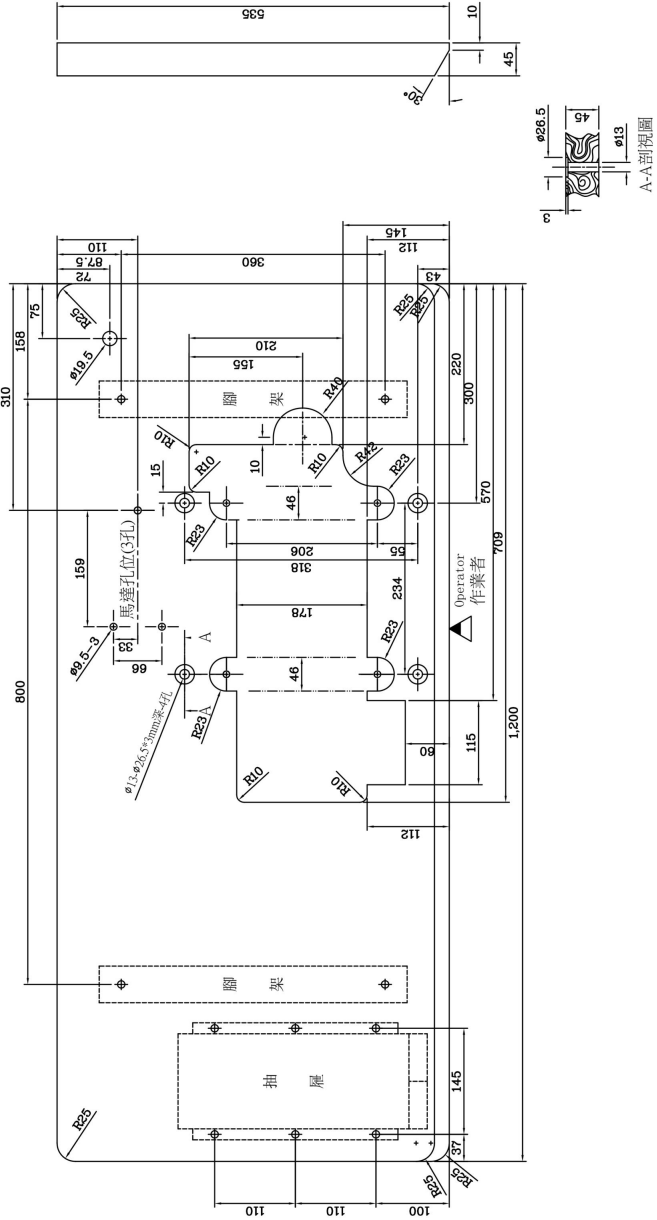
**EXCLUSIVE PARTS****专用配件**

Ref. No.	Parts No.	Description	品 名	Amt. Req.
1	07602801	Collar .....	轴环 .....	2
2	07602802	Screw(M6-1x12).....	螺丝 .....	4
3	07602803	Tape Reel.....	贴条盘 .....	2
4	07602804	Cushion Block .....	垫块 .....	1
5	07602805	Tape Reel Shaft.....	贴条主轴 .....	1
6	07602806	Nut.....	螺帽 .....	2
8	07602808	Tape Column Pipe.....	贴条圆柱管 .....	1
9	07602809	Tape Column Pipe Connector .....	接头 .....	1
10	07602810	Nut.....	螺帽 .....	2
11	07602811	Screw (M5-0.8×16.5).....	螺丝 .....	2
12	07602812	Fixing Lever.....	固定螺杆 .....	1
14	07602814	Tape Holder.....	贴条固定座 .....	1
15	07602815	Wood Screw.....	木螺丝 .....	3
16	07602816	Tape Reel Holder C.Set.....	贴条架组 .....	1
18	07602818	Wood Screw.....	木螺丝 .....	2
19	07602819	Waste Chute Top.....	入料槽顶部 .....	1
20	07602820	Waste Chute (B).....	入料槽B .....	1
21	07602821	Waste Chute (A).....	入料槽A .....	1
22	07602822	Washer.....	垫片 .....	4
23	07602823	Wood Screw.....	木螺丝 .....	4
24	07602824	Tape Column Pipe Connector C.Set.....	接头组 .....	1
25	07602825	Waste Chute C.Set.....	入料槽组 .....	1

技術通報  
<星銳牌 FW-760T(N)-FR系列・下沉式桌板・車架及相關配件安裝位置示意圖>  
通用机型：具修刀组件

2014年08月18日 版本

單位 = mm



技術通報  
<星銳牌 FW-760T(N)系列・平面式桌板・車架及相關配件安裝位置示意圖>  
通用机型：全部

2014年08月18日 版本

單位 = mm

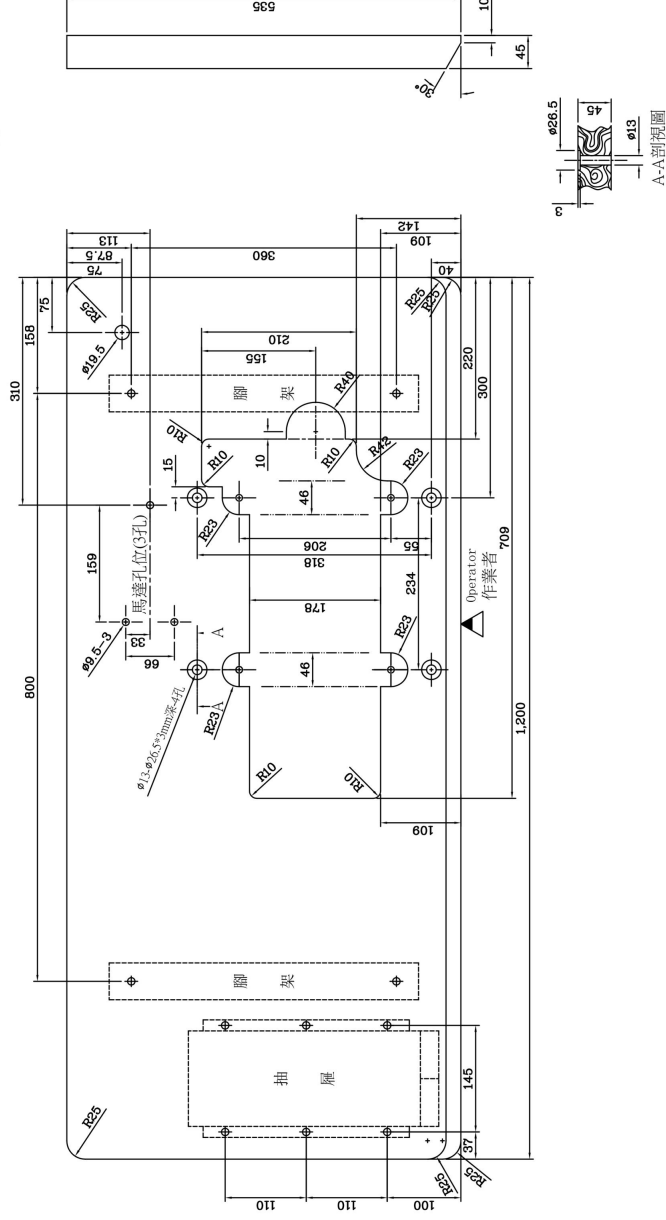
## 技術通報

### <星銳牌 FW-760T(N)系列・下沈式桌板・車架及相關配件安裝位置示意圖>

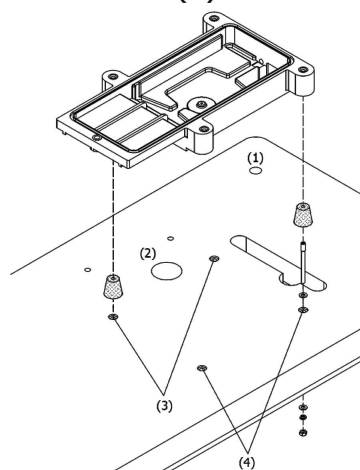
通用机型：无修刀组件

2014年08月18日 版本

單位 = mm



## FW-760T(N)系列产品与平面式桌板安装方式



(一) 各部位置说明：

- (1) 线架孔
- (2) 中继线孔(小马达连接电脑箱)( $\phi 50\text{mm}$ )
- (3) 固定机台孔位( $\phi 7.5\text{mm}$ ),  
需使用螺丝组如下图(a),共两组
- (4) 固定机台孔位( $\phi 7.5\text{mm}$ ),  
需使用螺丝组如下图(b),共两组

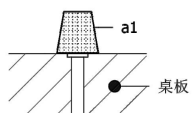
(二) 螺丝种类说明：

(a)	(b)
a1.防震橡胶	b1.防震橡胶
a2.橡胶垫片	b2.固定螺丝(长)
a3.平面垫片	b3.垫片
a5.微调螺母	b4.弹簧垫片
a4.弹簧垫片	b5.螺母
a6.防松螺母	
a7.固定油盘螺丝	

(三) 螺丝组装说明：

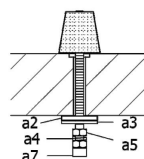
(a)螺丝安装步骤：

①



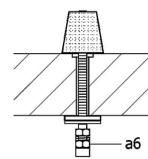
先将防震橡胶孔位与桌板孔位对齐。

②



固定油盘螺丝由下往上旋至顶点,再用微调螺母往上旋转接触桌板底面。  
(☆注意!橡胶垫片处于轻微夹住,平面垫片尚可旋转状态)

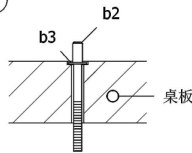
③



确定微调螺母位置后固定不动,以防松螺母锁紧即可。

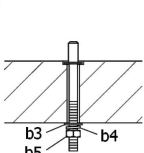
(b)螺丝安装步骤：

①



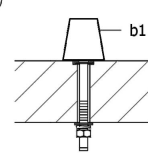
固定螺丝和垫片置入。

②



垫片、弹簧垫片、螺母由下旋入锁紧。

③

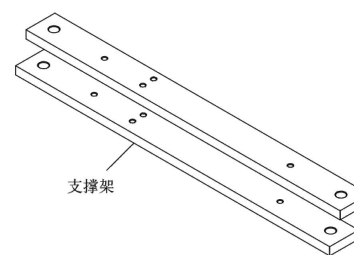


最后将防震橡胶套入。

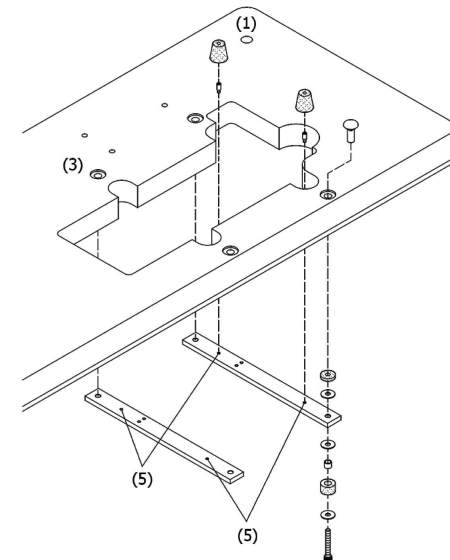
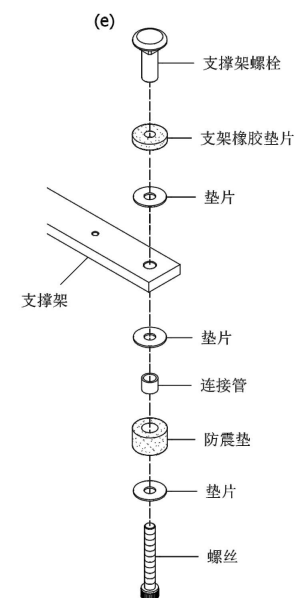
## FW-760T(N)系列产品与下沉式桌板安装方式

(一) 各部位置说明：

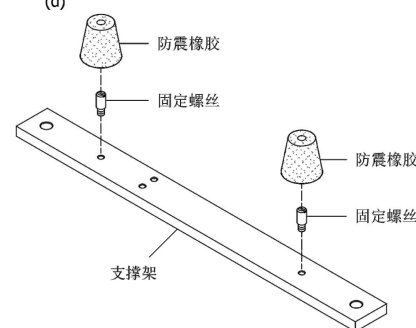
- (1) 线架孔
- (3) 托架固定孔X4孔,需使用螺丝如下图(e),共四组
- (5) 固定机台孔位( $\phi 13\text{mm}$ ),  
需使用螺丝组如下图(d),共四组








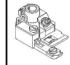
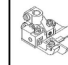
(二) 螺丝组装说明：



(d)

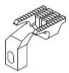
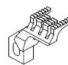



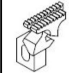


附件一

<div>Main</div> <div>Models</div>							
	针缩	一般针板	Q组用针板	右修刀针板	一般押脚	Q组用押脚	右刀用押脚
FW760N/T-240	07870707-240	07600927-240			07870814-240		
FW760N/T-248	07870707-248	07600927-248			07870814-248		
FW760N/T-348	07870707-348	07600927-348			07870814-348		
FW760N/T-356	07870707-356	07600927-356			07870814-356		
FW760N/T-364	07870707-364	07600927-364			07870814-364		
FW760N/T-460	07870707-460	07600927-460			07870814-460		
FW760N/T-464	07870707-464	07600927-464			07870814-464		
FW760N/T-240-Q	07870707-240		07601921-240			07601937-240	
FW760N/T-248-Q	07870707-248		07601921-248			07601937-248	
FW760N/T-348-Q	07870707-348		07601921-348			07601937-348	
FW760N/T-356-Q	07870707-356		07601921-356			07601937-356	
FW760N/T-364-Q	07870707-364		07601921-364			07601937-364	
FW760N/T-460-Q	07870707-460		07601921-460			07601937-460	
FW760N/T-464-Q	07870707-464		07601921-464			07601937-464	
FW760N/T-240-FR	07870707-240			07602543-240			07602480-240
FW760N/T-248-FR	07870707-248			07602543-248			07602480-248
FW760N/T-348-FR	07870707-348			07602543-348			07602480-348
FW760N/T-356-FR	07870707-356			07602543-356			07602480-356
FW760N/T-364-FR	07870707-364			07602543-364			07602480-364
FW760N/T-460-FR	07870707-460			07602543-460			07602480-460
FW760N/T-464-FR	07870707-464			07602543-464			07602480-464

GAUGE PARTS LIST

标准规格件

									
一般用主齿	一般用差动齿	Q组用主齿	Q组用差动齿	右刀用主齿	右刀用差动齿				
07601248-240	07601250-240								
07601248-248	07601250-248								
07601248-348	07601250-348								
07601248-356	07601250-356								
07601248-364	07601250-364								
07601248-460	07601250-460								
07601248-464	07601250-464								
		07601920-240	07601919-240						
		07601920-248	07601919-248						
		07601920-348	07601919-348						
		07601920-356	07601919-356						
		07601920-364	07601919-364						
		07601920-460	07601919-460						
		07601920-464	07601919-464						
				07602545-240	07602544-240				
				07602545-248	07602544-248				
				07602545-348	07602544-348				
				07602545-356	07602544-356				
				07602545-364	07602544-364				
				07602545-460	07602544-460				
				07602545-464	07602544-464				